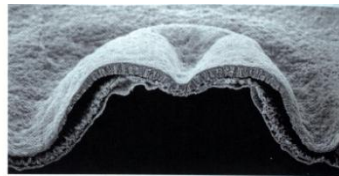
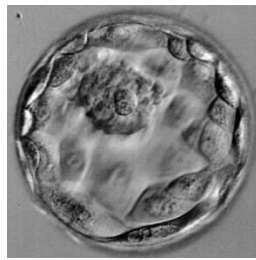
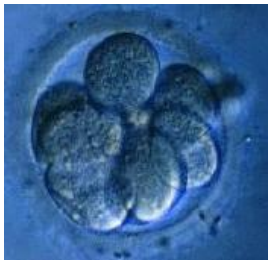
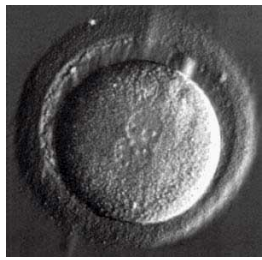


Embriologia da face e da cavidade oral





Dia 0

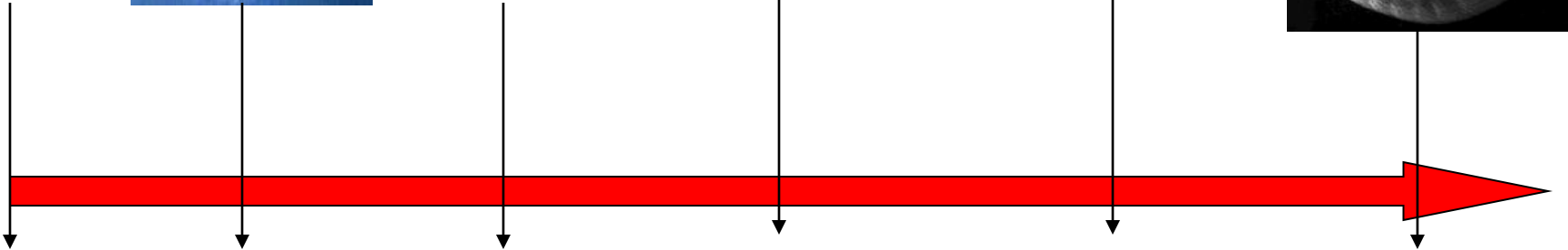
Dia 3

Dia 5

Dia 15

Dia 20

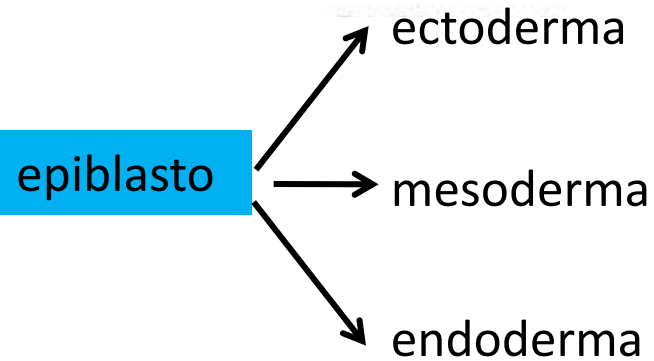
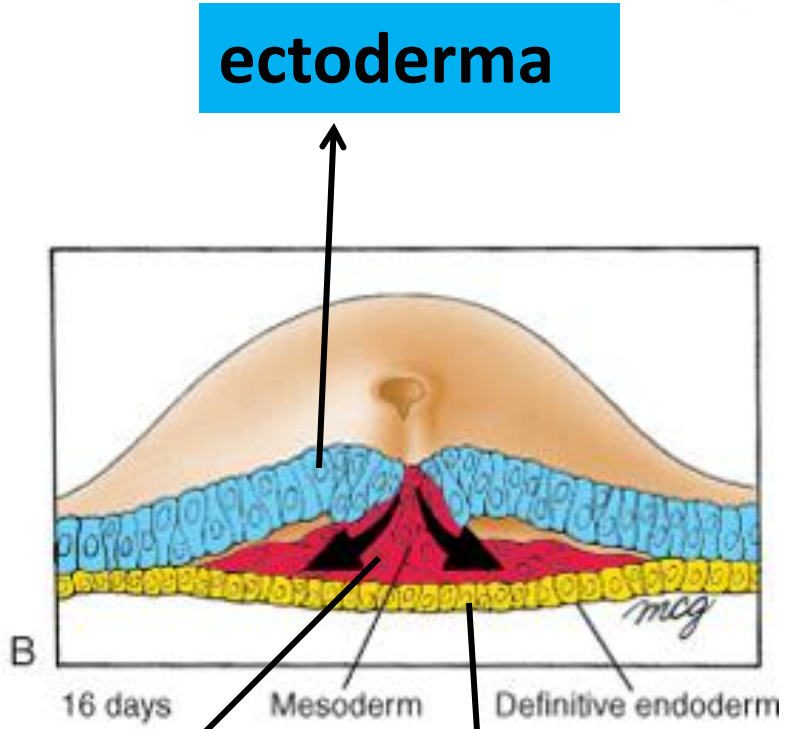
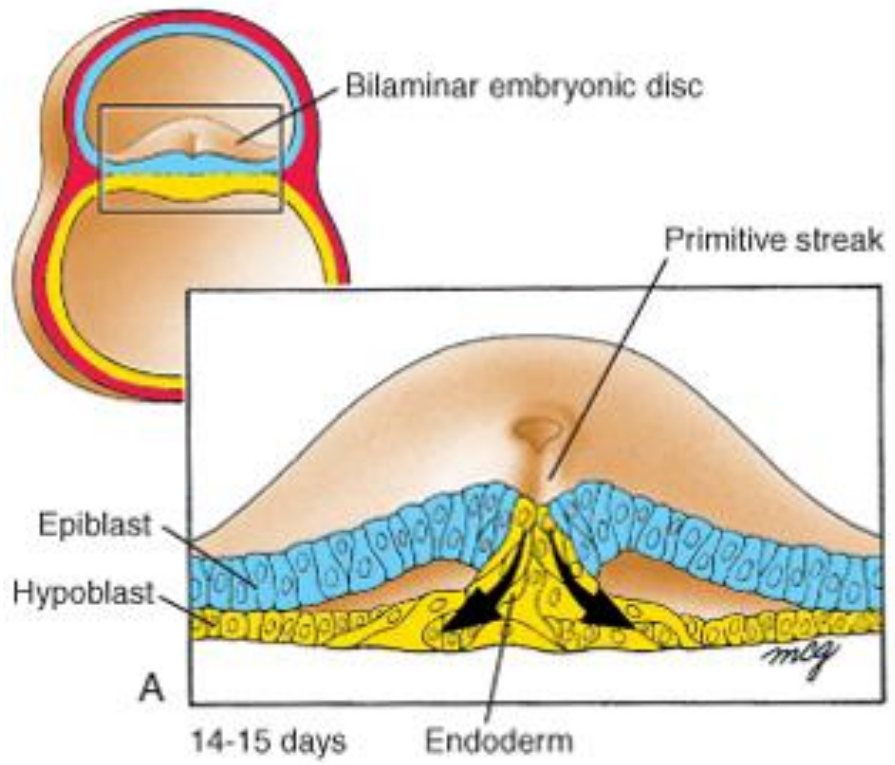
1^o Mês



14-16 DIAS

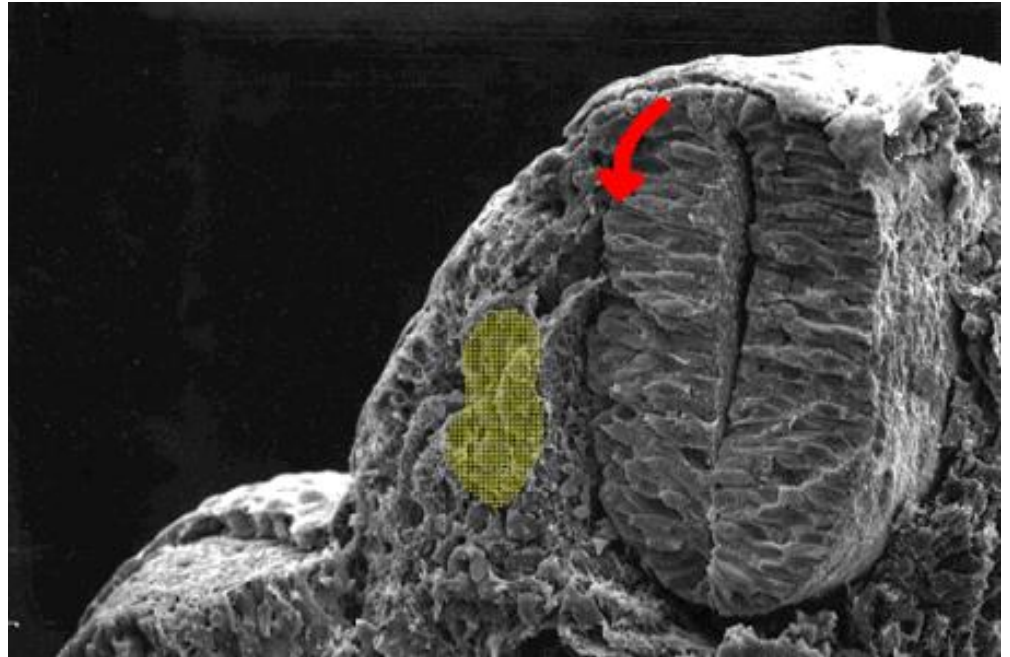
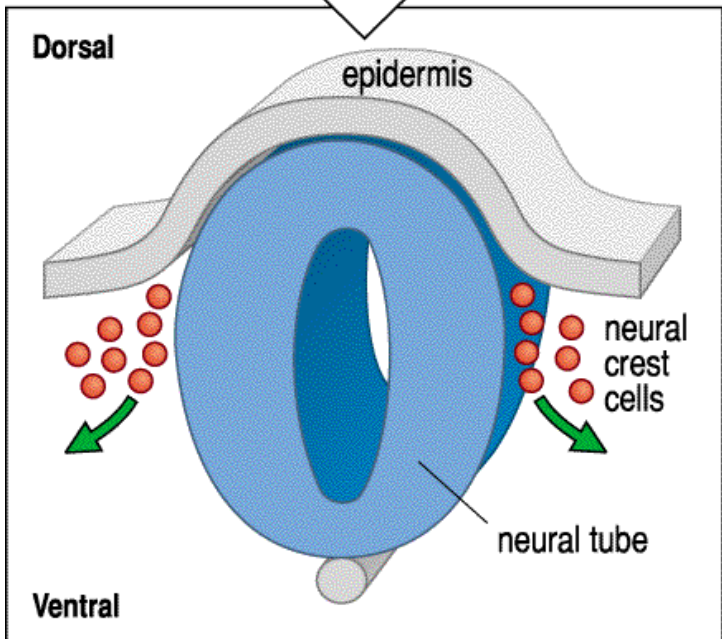
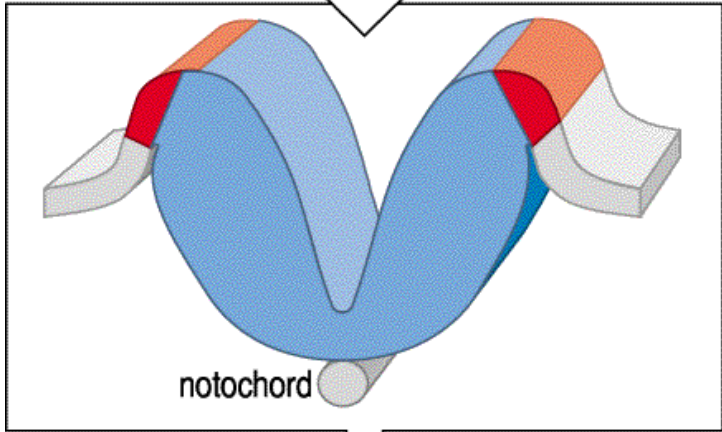
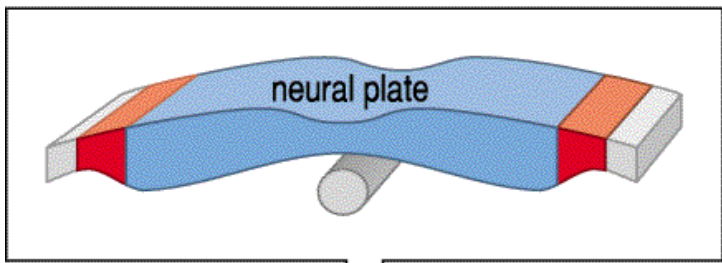
Gastrulação

RELEMBRAR



mesoderma

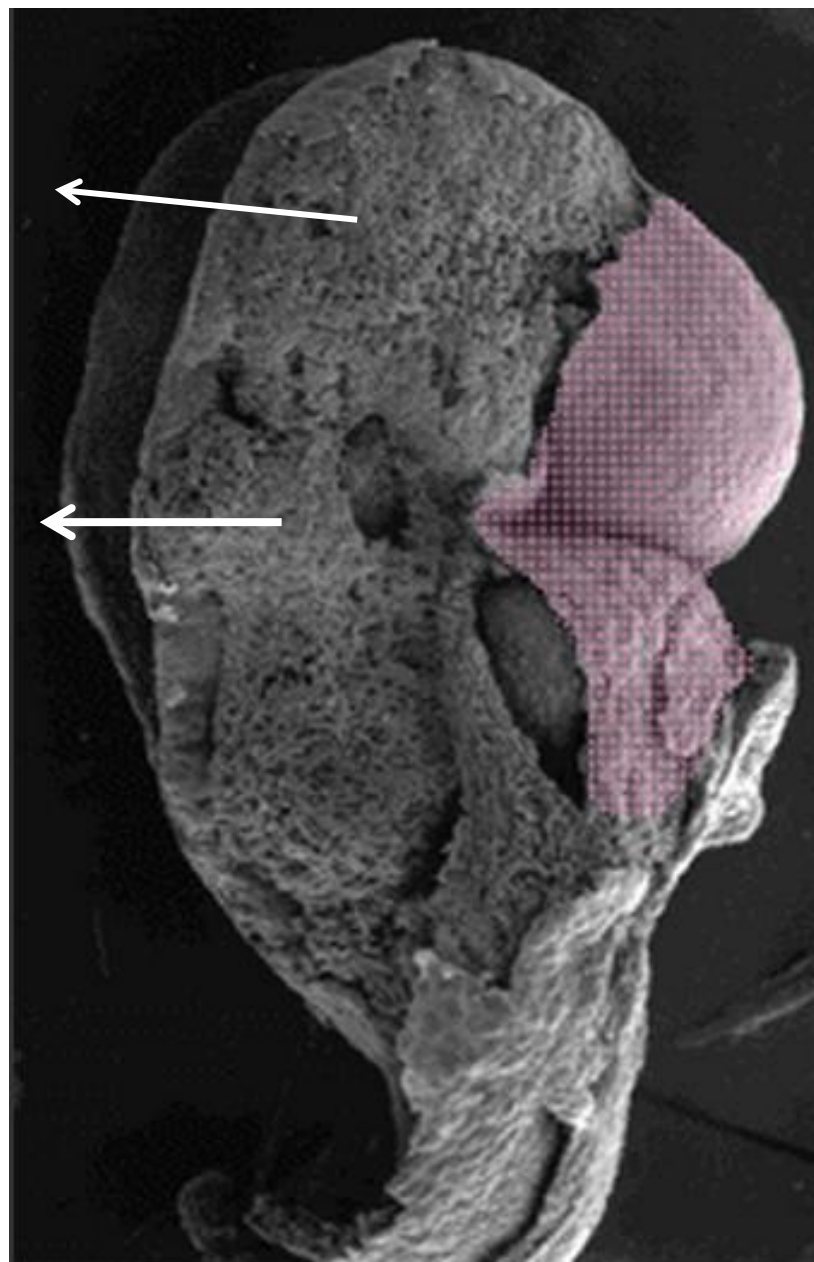
endoderma



**Remoção da
ectoderme**

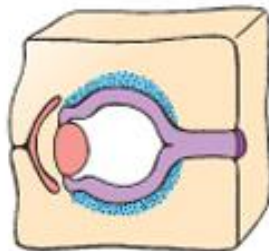


**Mesênquima =
tecido conjuntivo
do embrião**



Estruturas do crânio derivadas da crista neural

Cranial neural crest



Components of eye



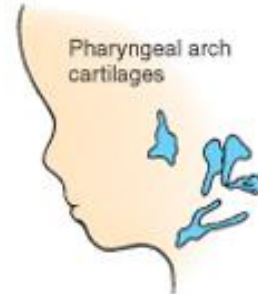
Dermal bones of skull

Truncoconal septum

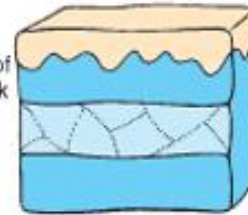


Odontoblasts

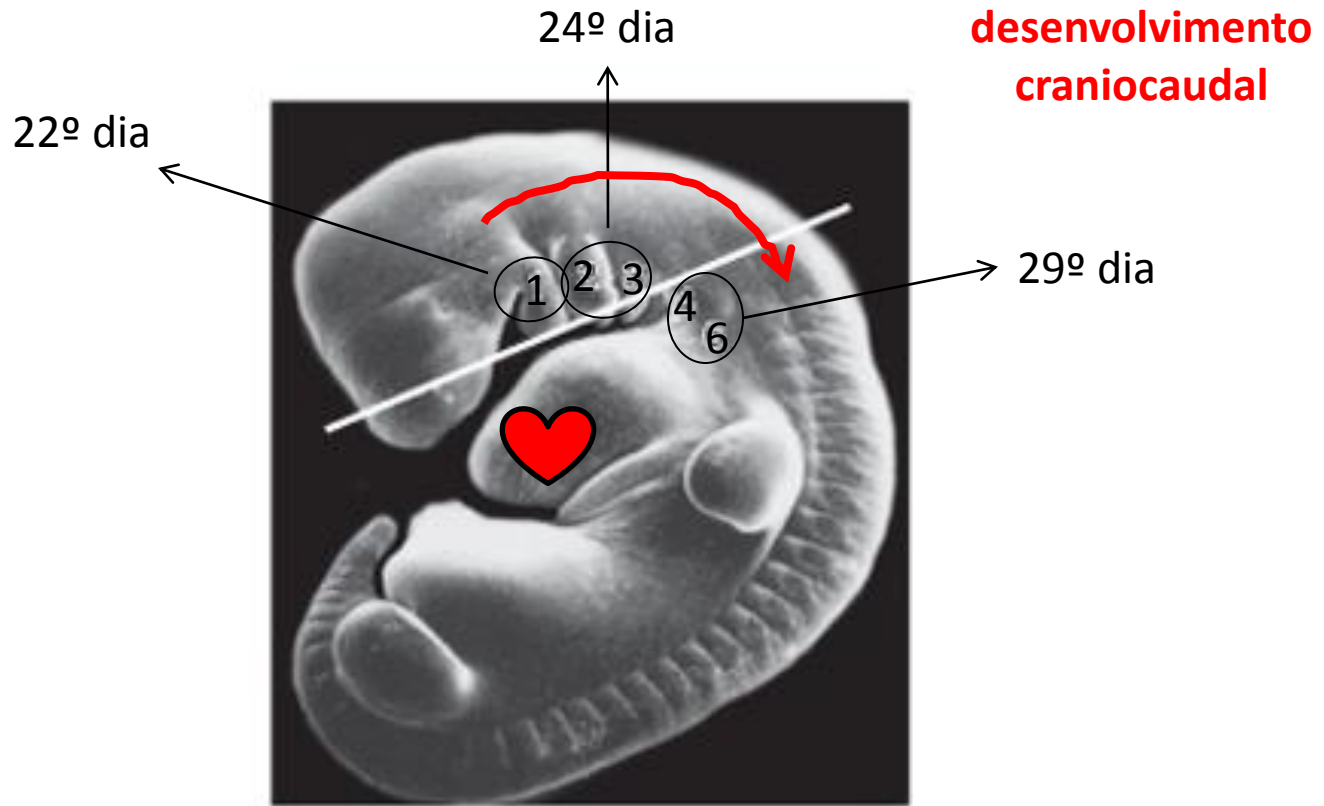
Pharyngeal arch cartilages



Dermis and hypodermis of face and neck



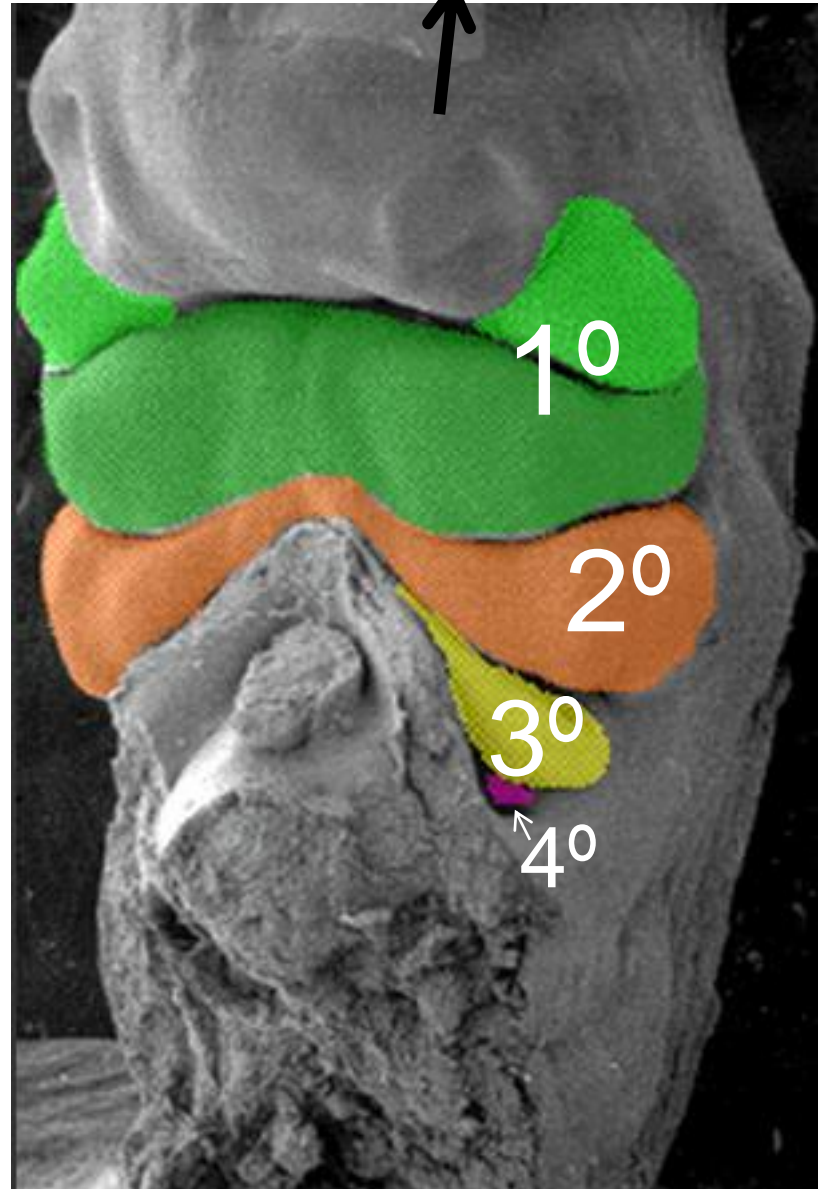
Arcos faríngeos



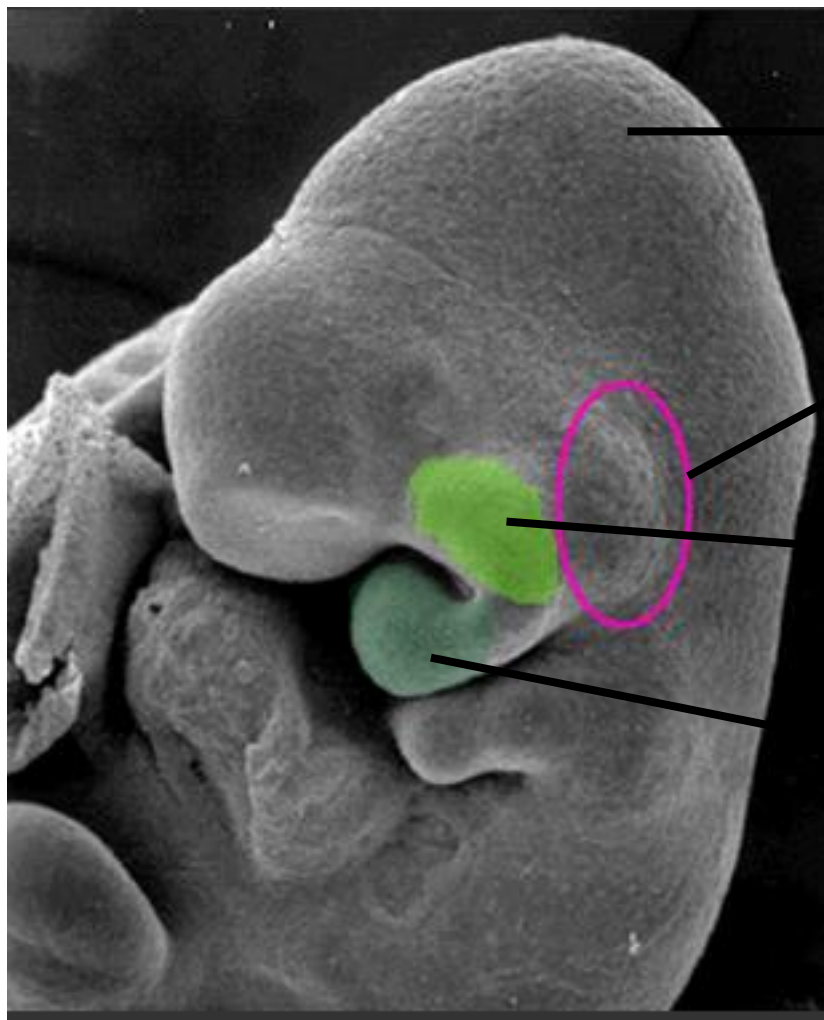
As Estruturas faciais derivam primariamente dos **arcos faríngeos**

5ª semana

Saliência fronto-nasal



29 dias



→ **saliência fronto-nasal**

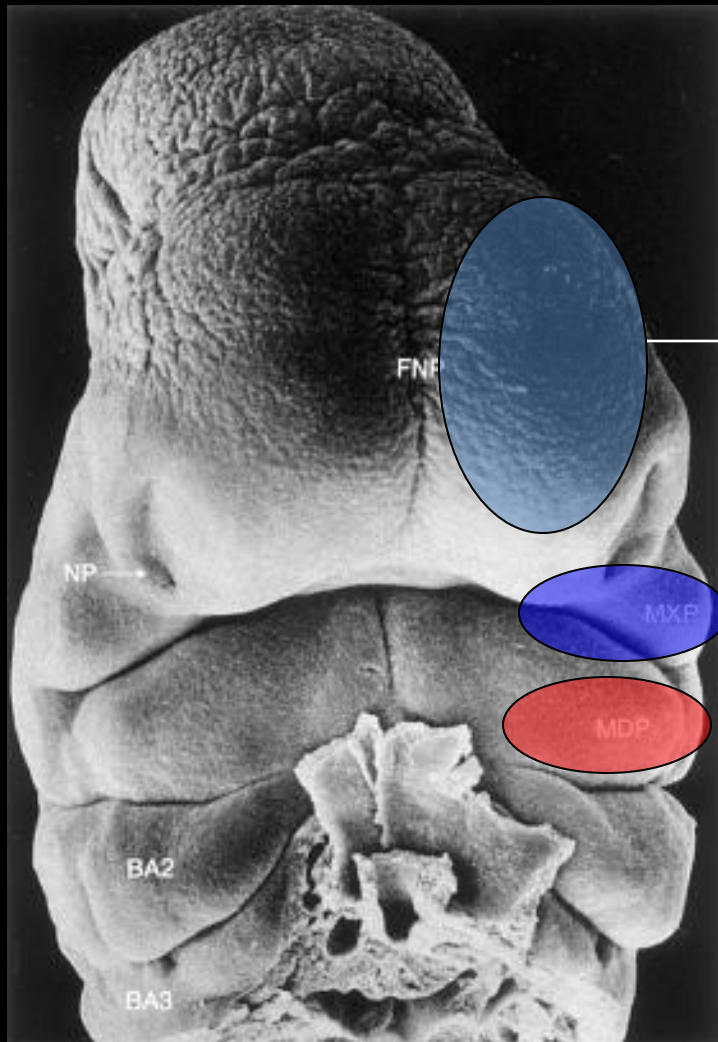
→ **gânglio trigeminal**

→ **proeminência
maxilar**

→ **proeminência
mandibular**

**1º ARCO
FARÍNGENO**

5ª semana



Saliência FRONTO-NASAL

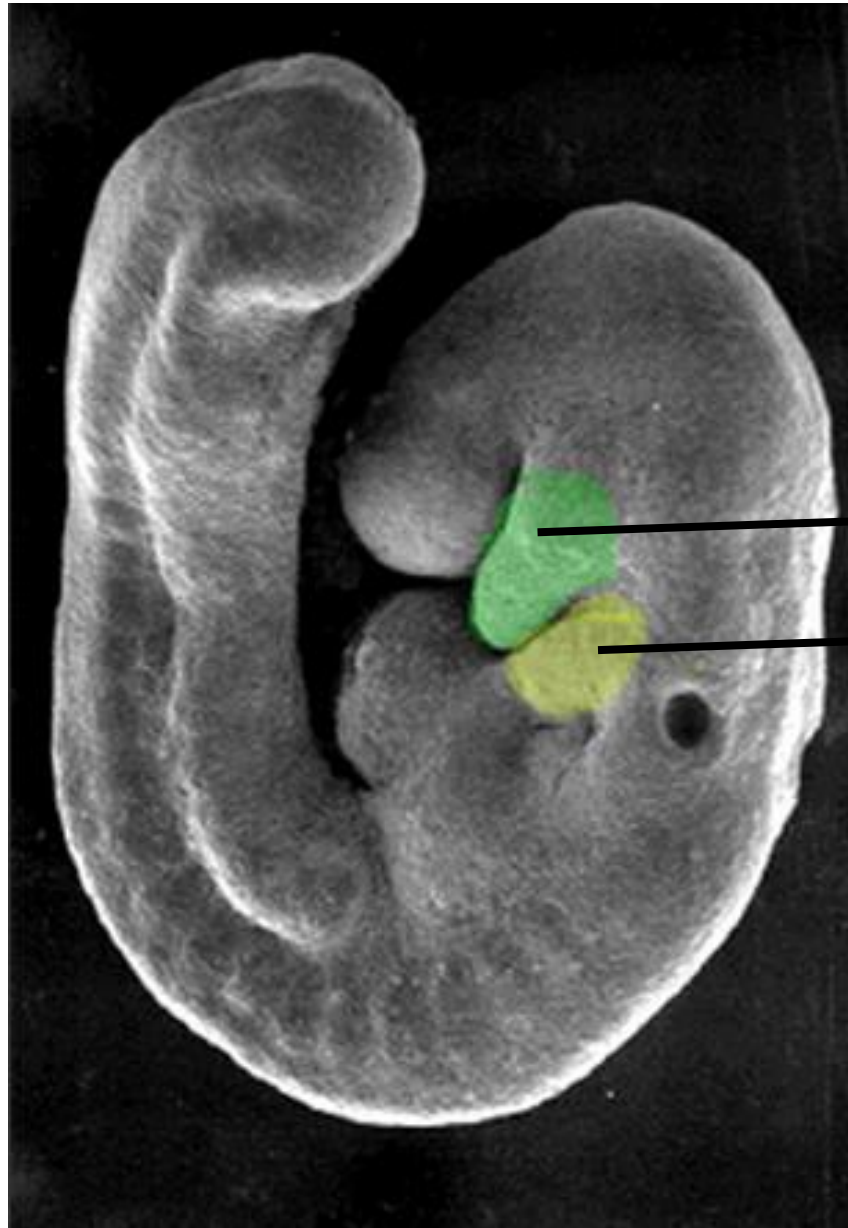
Saliência MAXILAR

Saliência MANDIBULAR



1º arco faríngeo

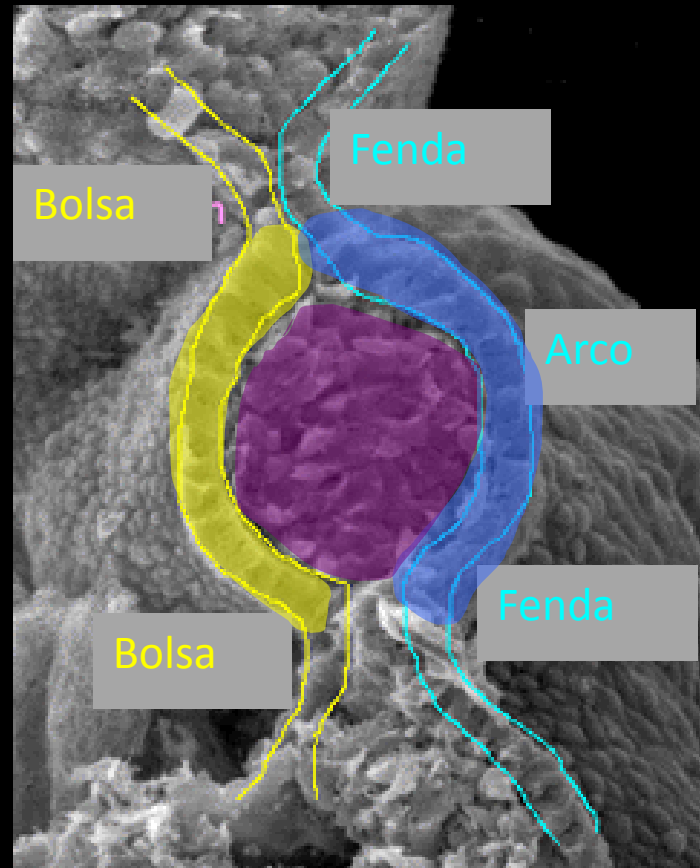
27 dias



1º arco faríngeo

2º arco faríngeo

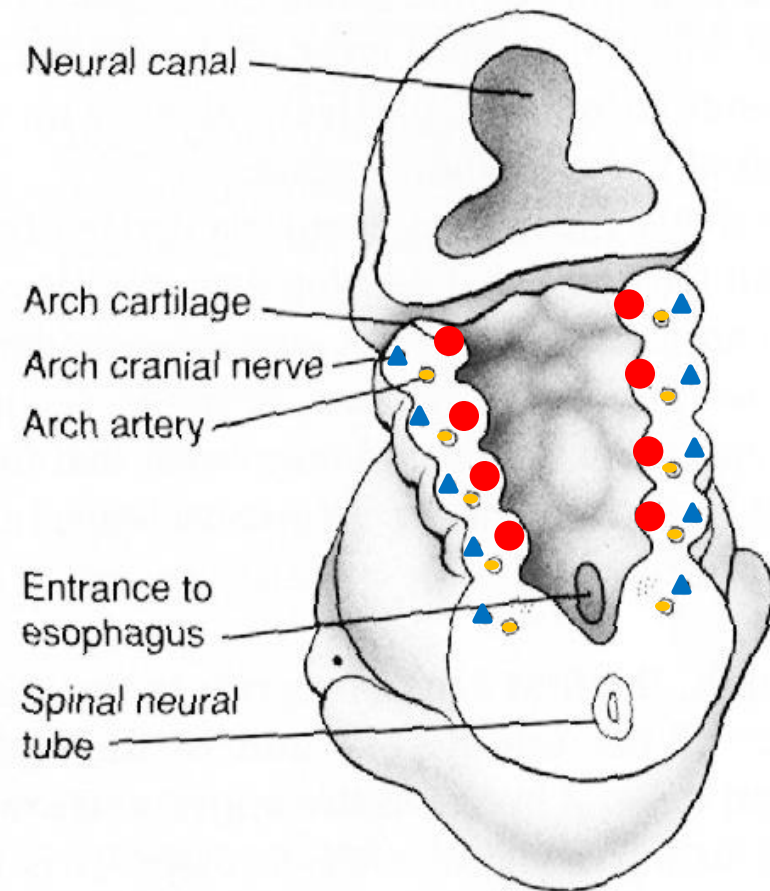
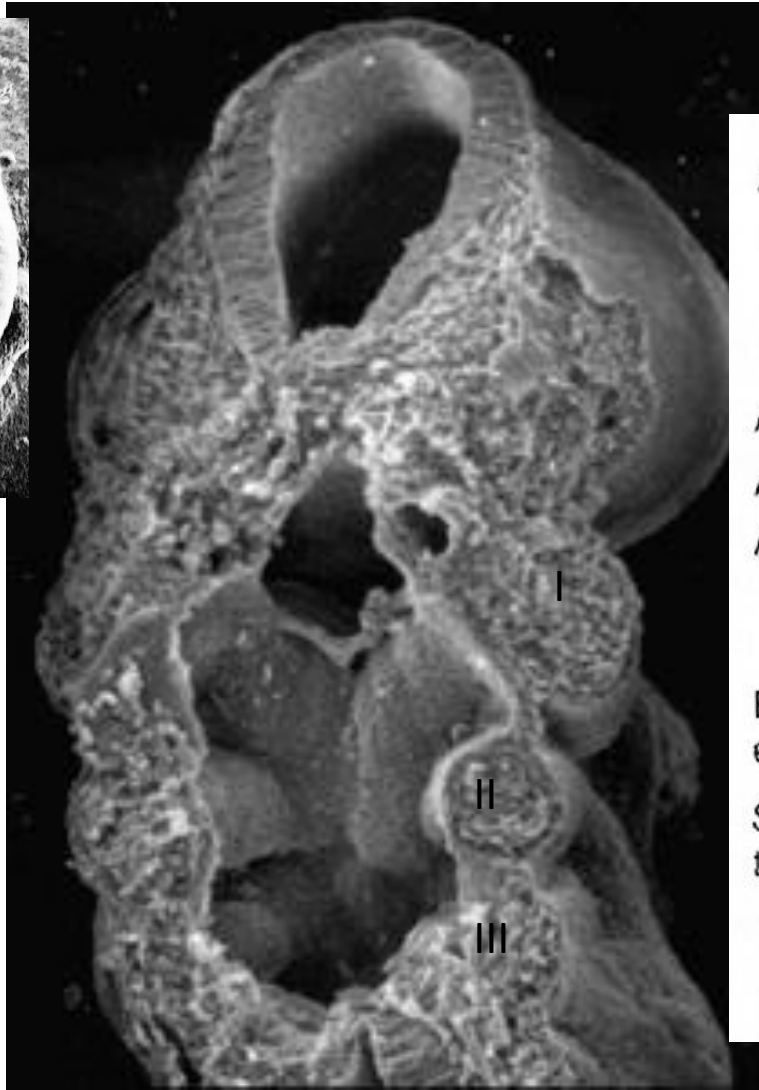
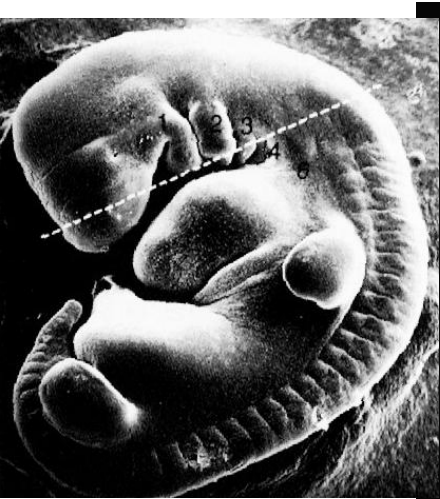
Arcos faríngeos por dentro..



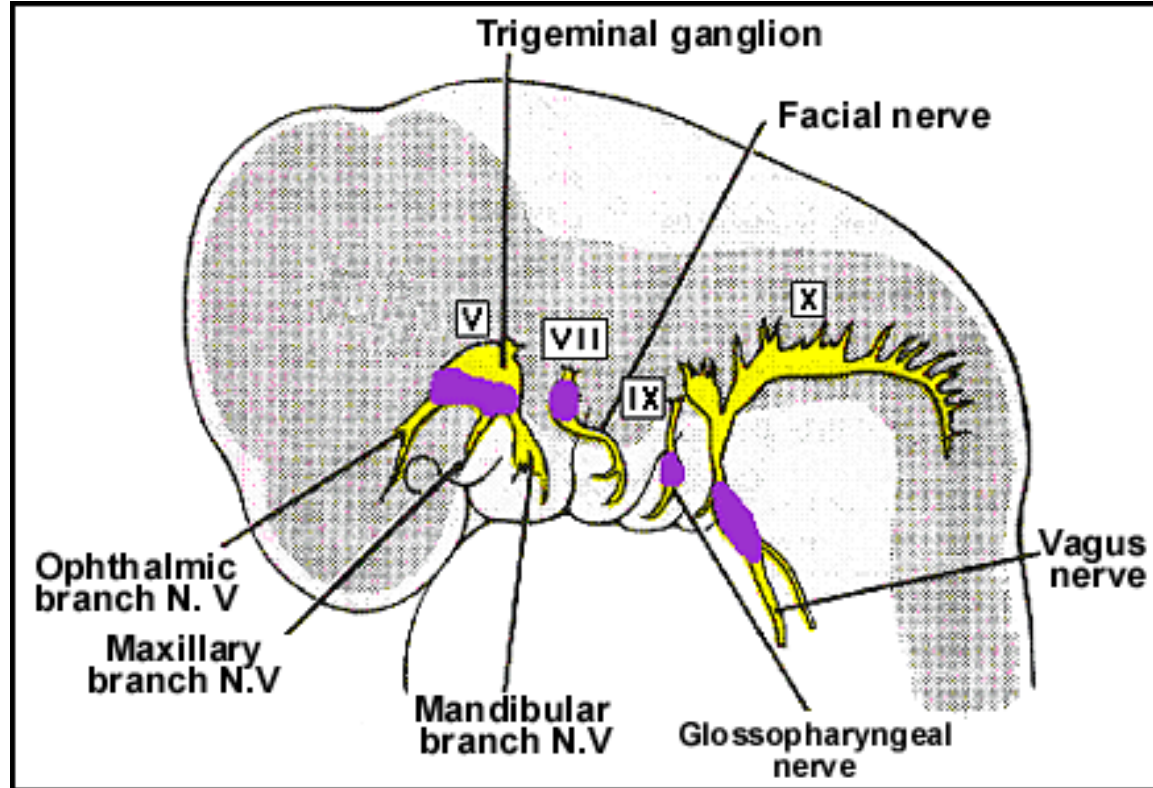
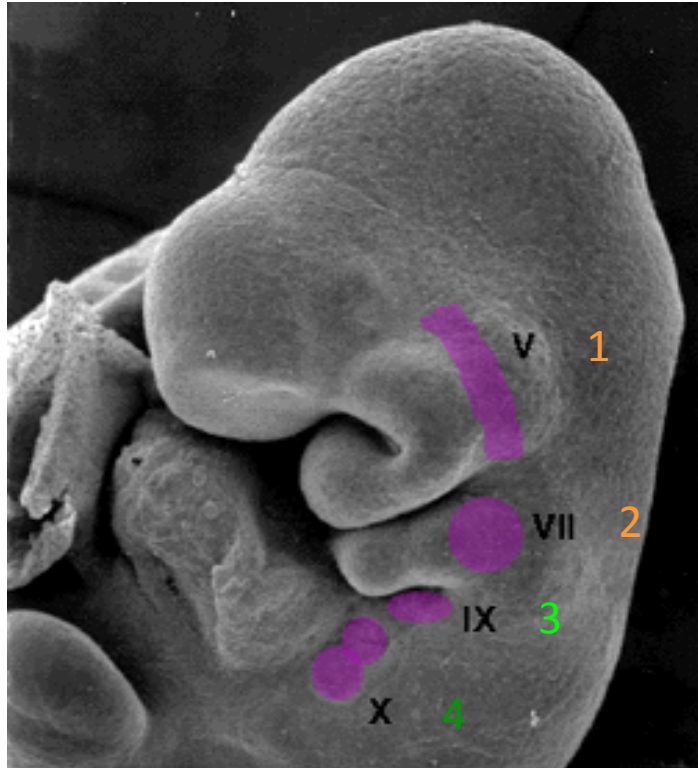
Cada Arco faríngeo é revestido por **Ectoderma** na superfície externa, e **Endoderma** na superfície interna. O “recheio” é mesênquimal, de origem **mesodérmica** e de **cristas neurais**.

Todo arco faríngeo tem associado:

1 arco cartilagenoso (estrutural) + 1 nervo craniano (inervação) + 1 artéria (vascularização)



Nervos cranianos dos arcos faríngeos

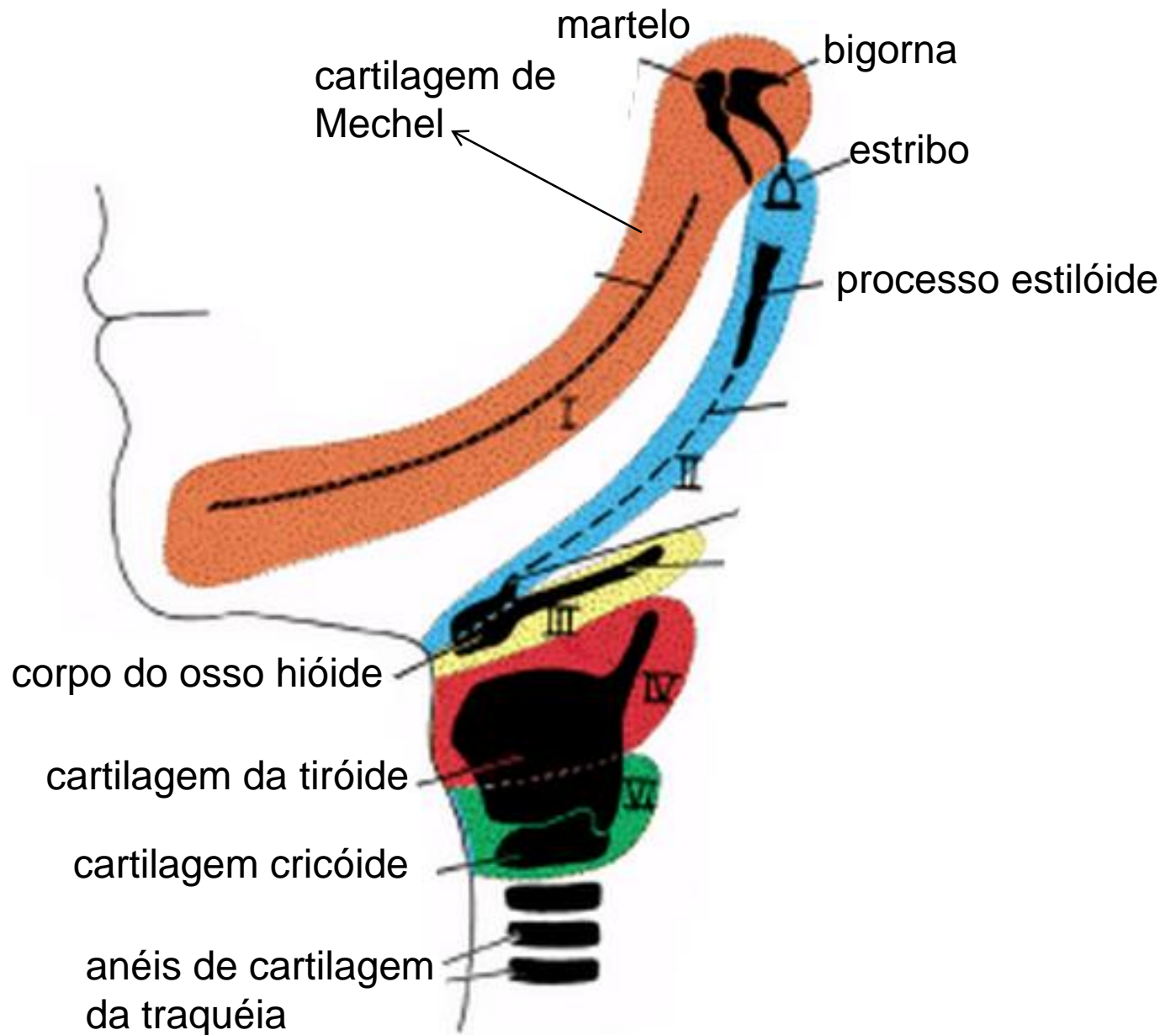


V= Trigeminal

VII=Facial

IX= Glossofaríngeo

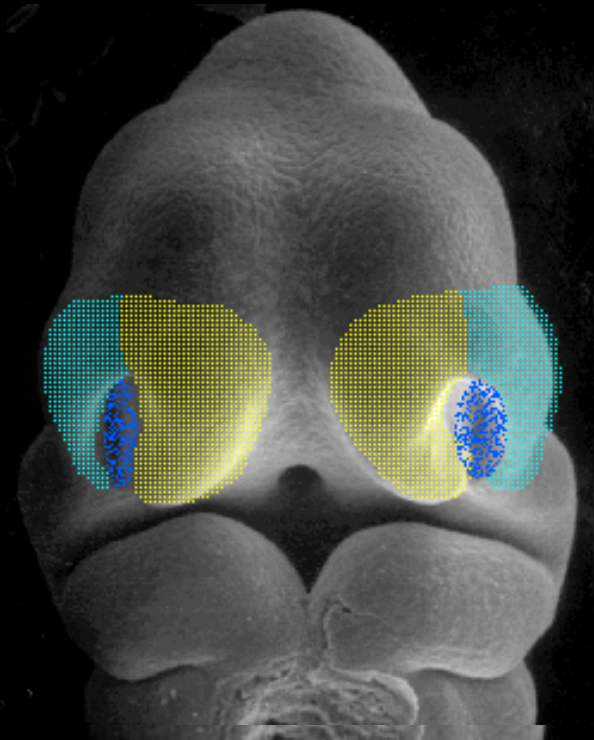
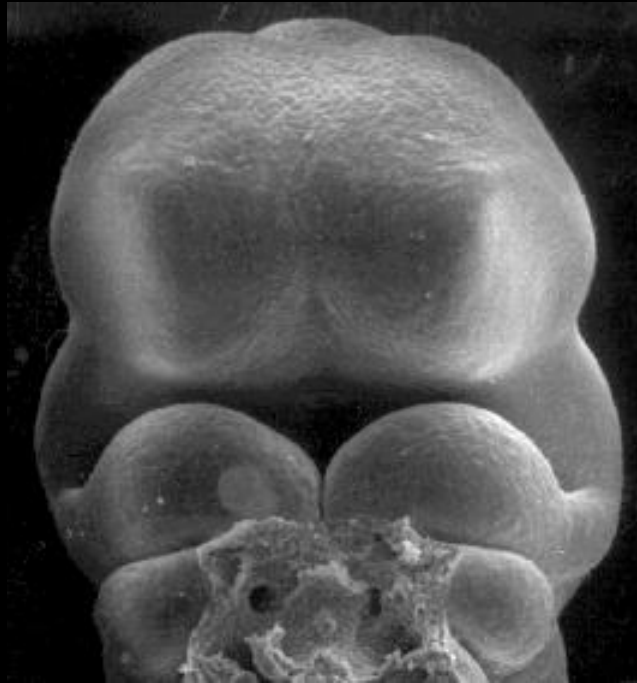
X=Vago





MORFOLOGIA
DA FACE

Invaginação do Placóide Nasal

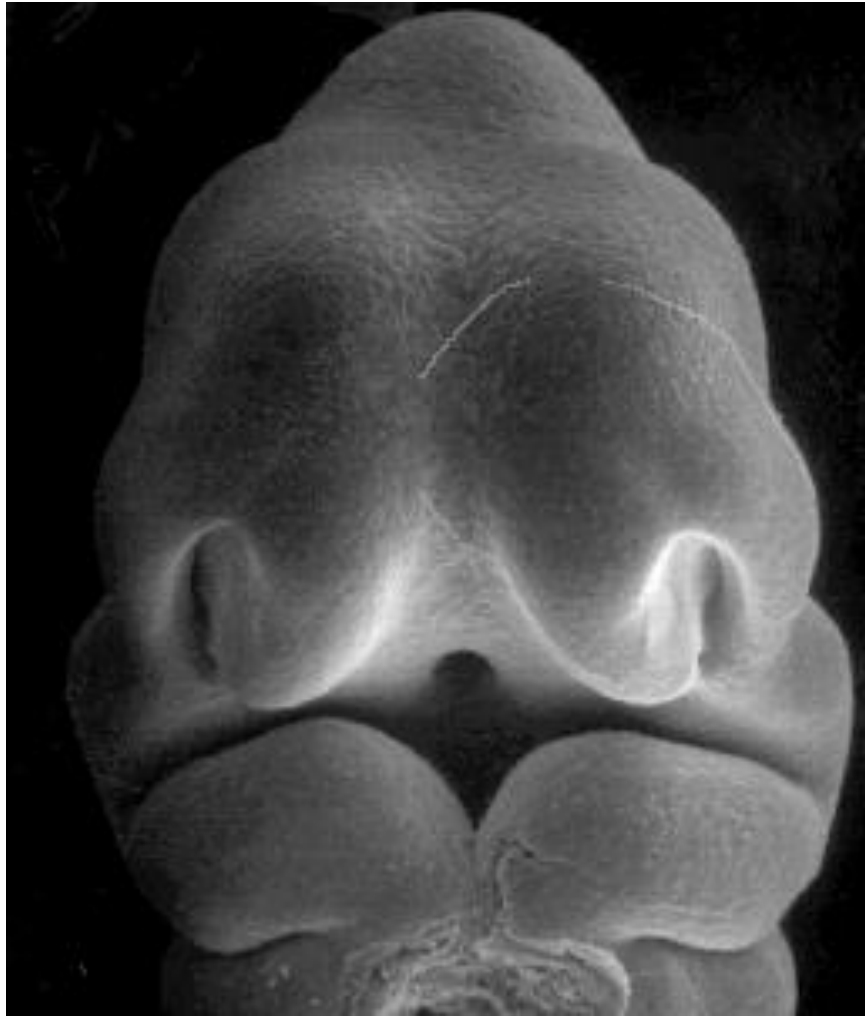


A invaginação forma as saliência nasais

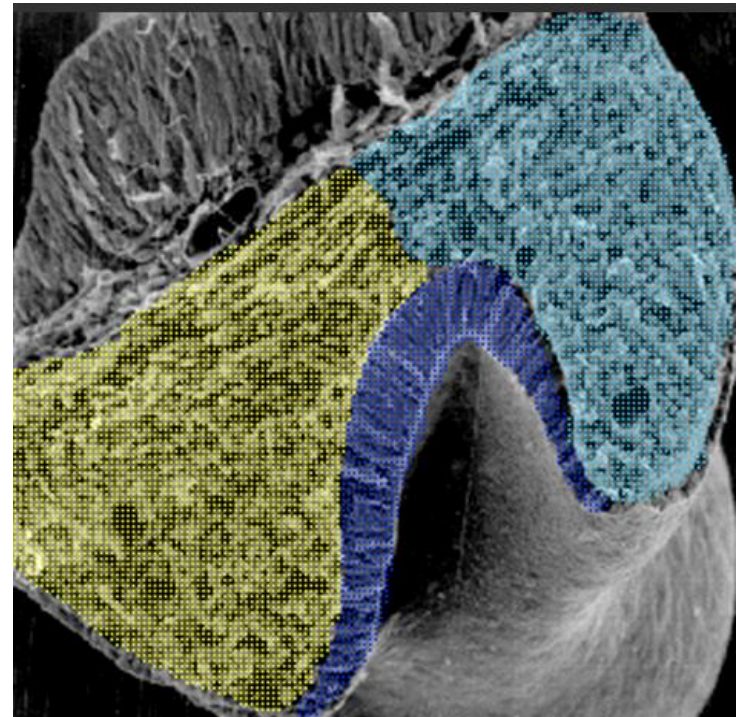
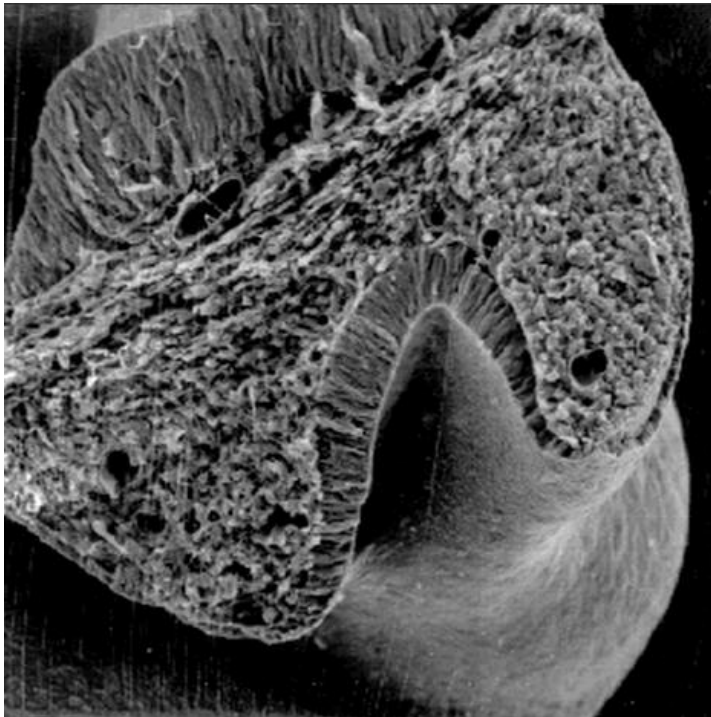
Saliência Nasal Medial

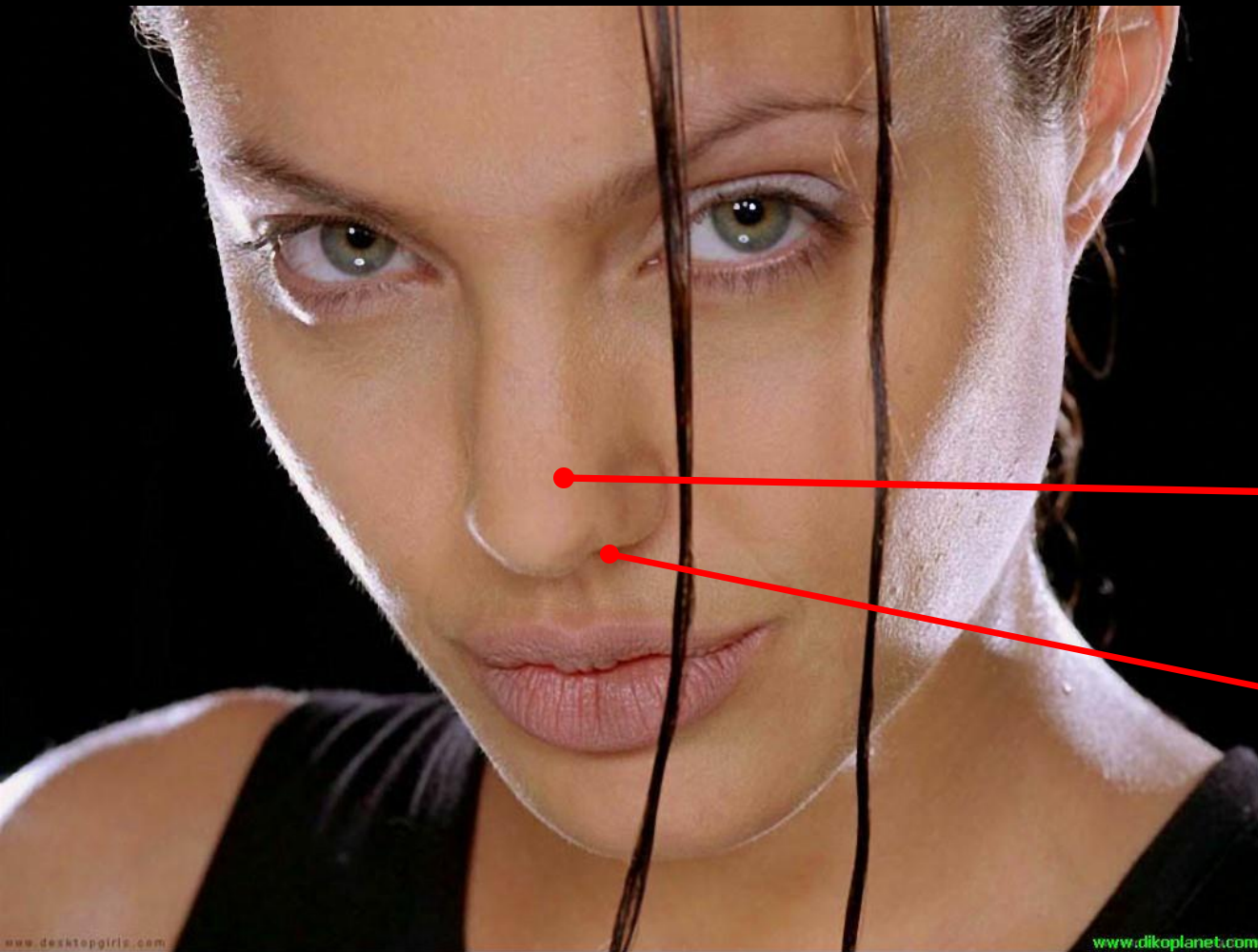
Saliência Nasal Lateral

Fosseta Nasal



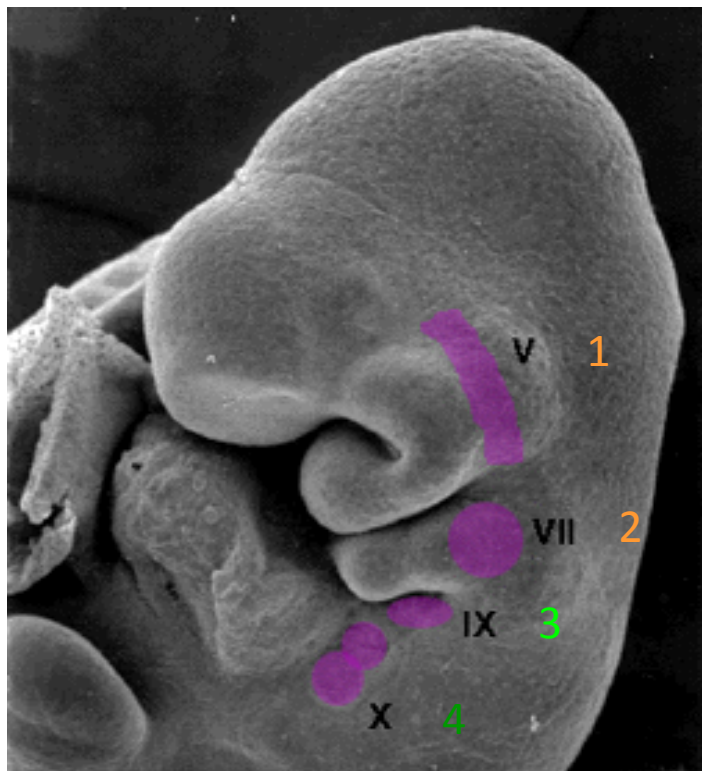
5ª semana





Saliência Nasal Medial+
Lateral

Fosseta Nasal



ARCO	Nariz	Palato	Língua
Eminência Frontal (0)	Nariz		
1			
2			
3			
4			

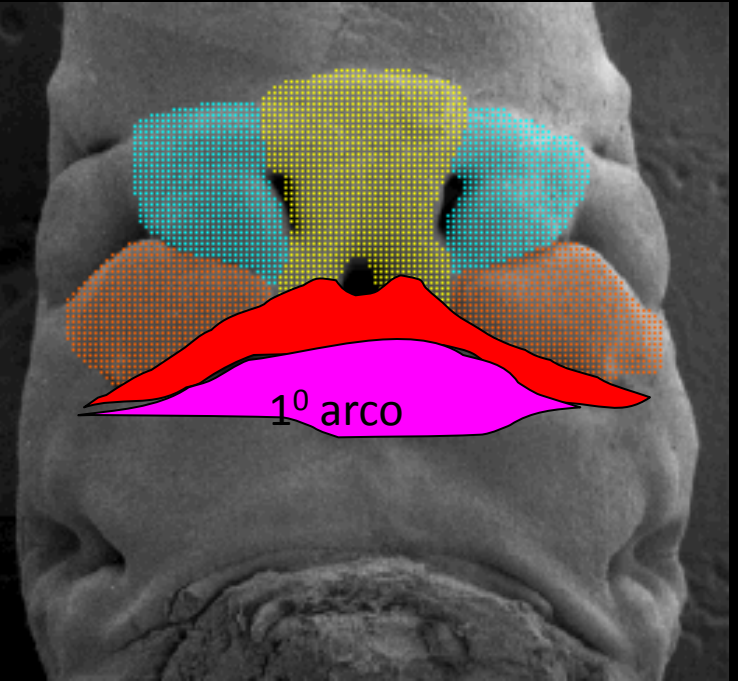
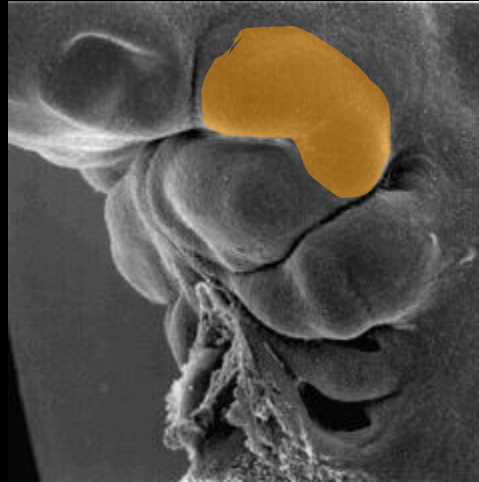
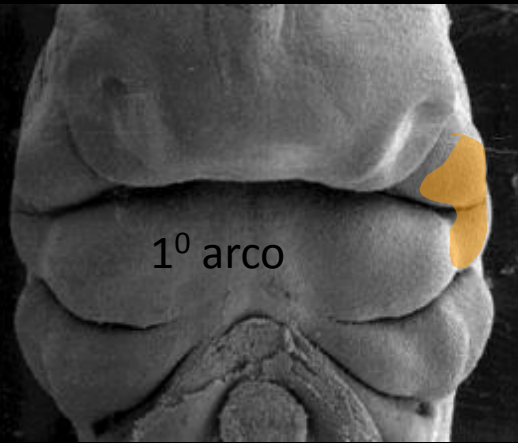
Formação dos lábios



Saliência Nasal Medial

Saliência Nasal Lateral

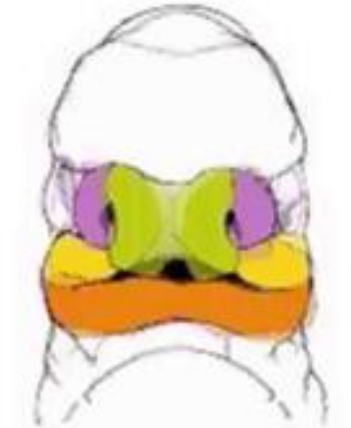
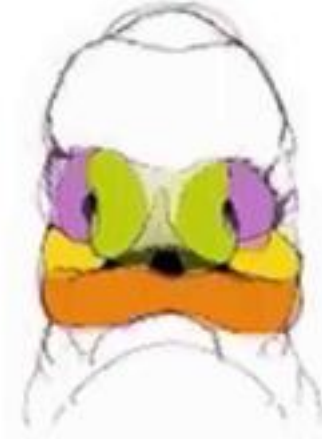
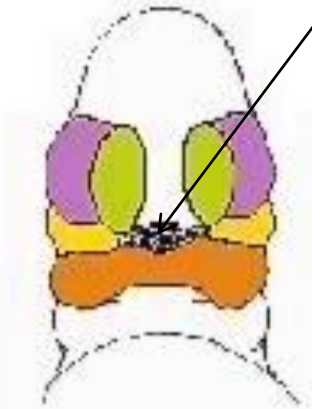
Processo Maxilar



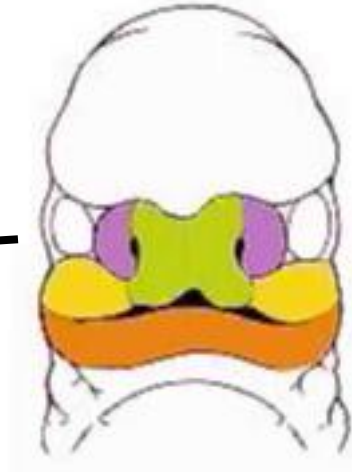
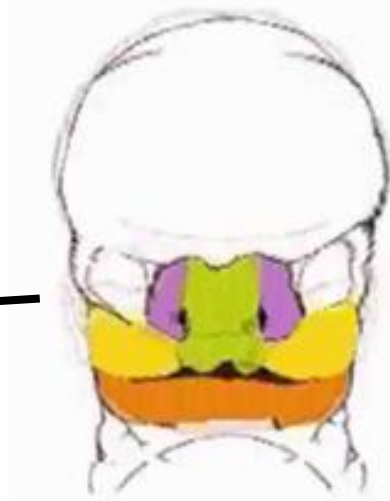
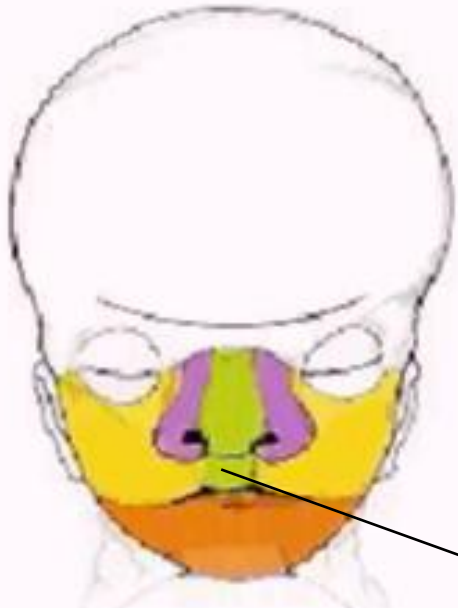
Lábio Inferior vem da saliência Mandibular
(= 1º arco)



rompimento da membrana orofaríngea

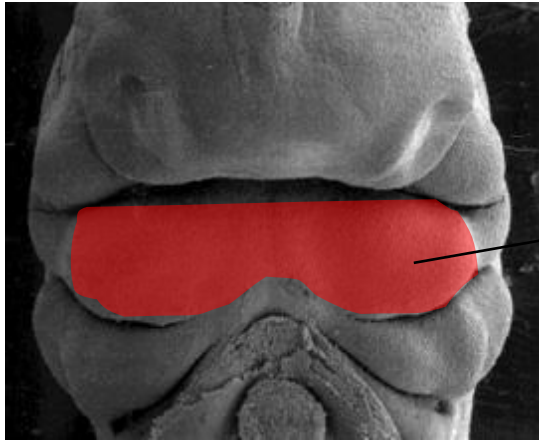


6º semana

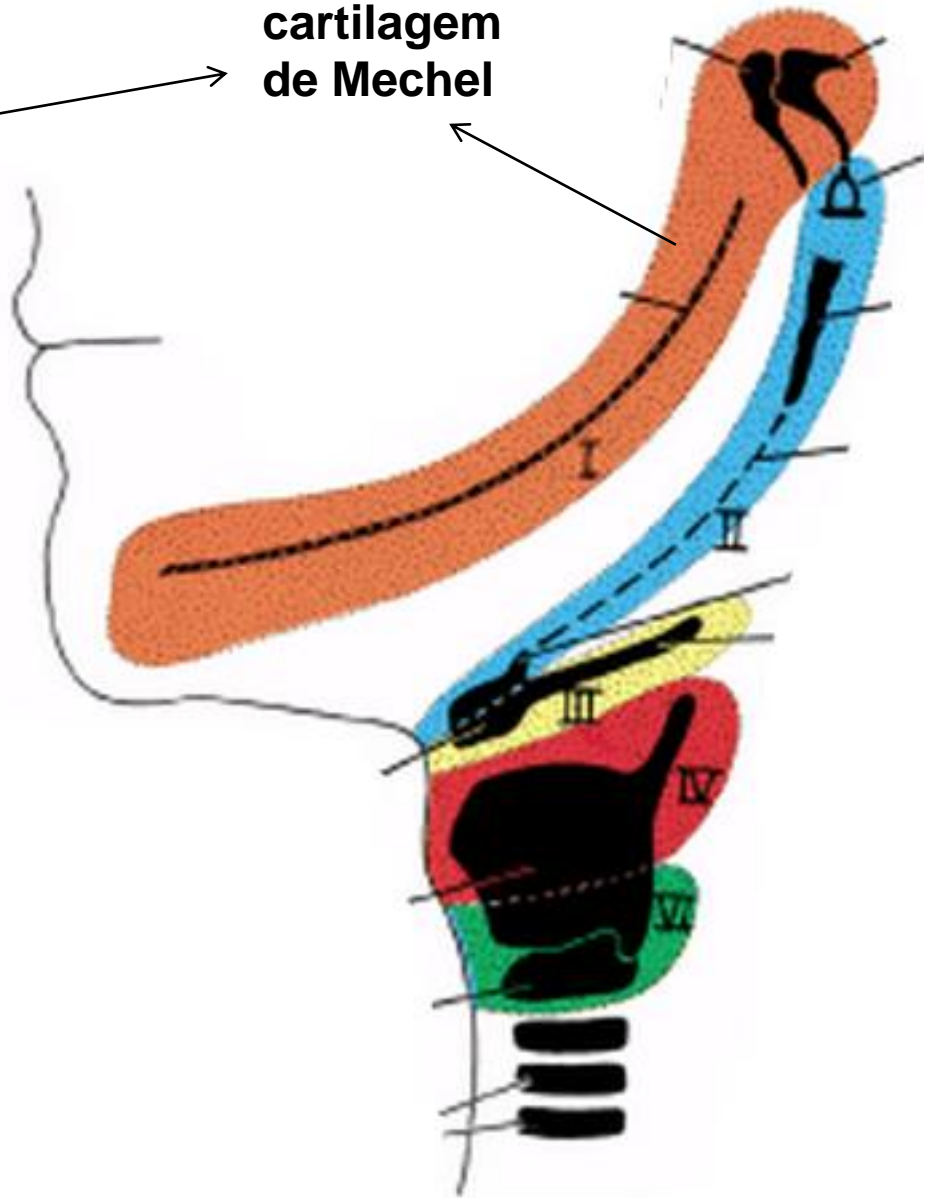


10º semana

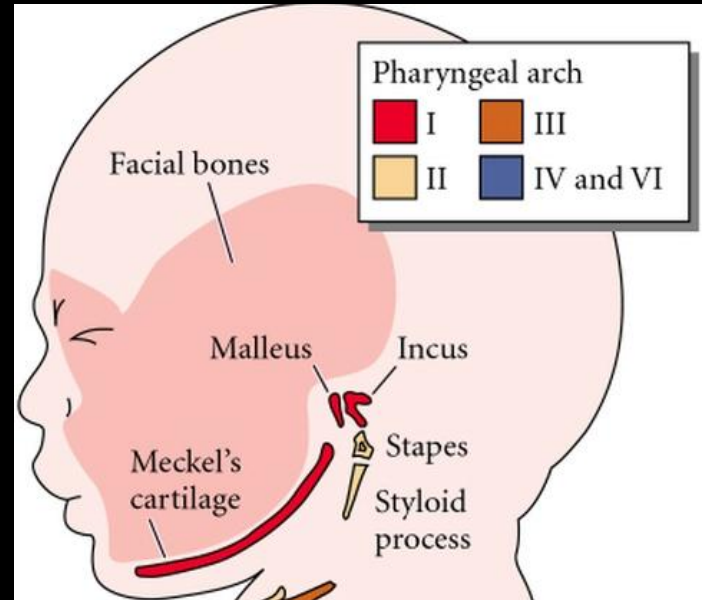
filtro do nariz

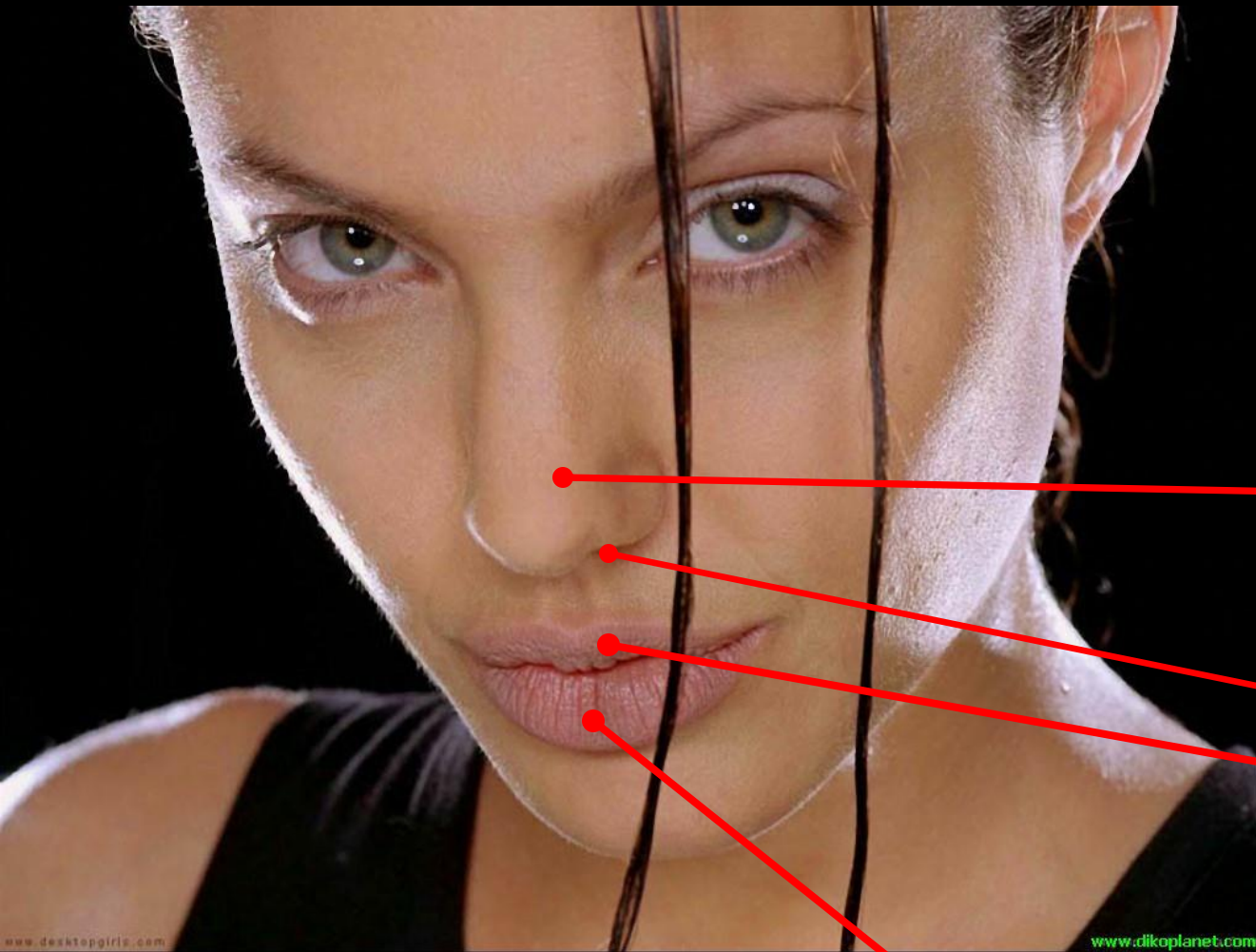


cartilagem
de Mechel



O Primeiro Arco faríngeo dá origem ao LÁBIO INFERIOR e ao OSSO MANDIBULAR



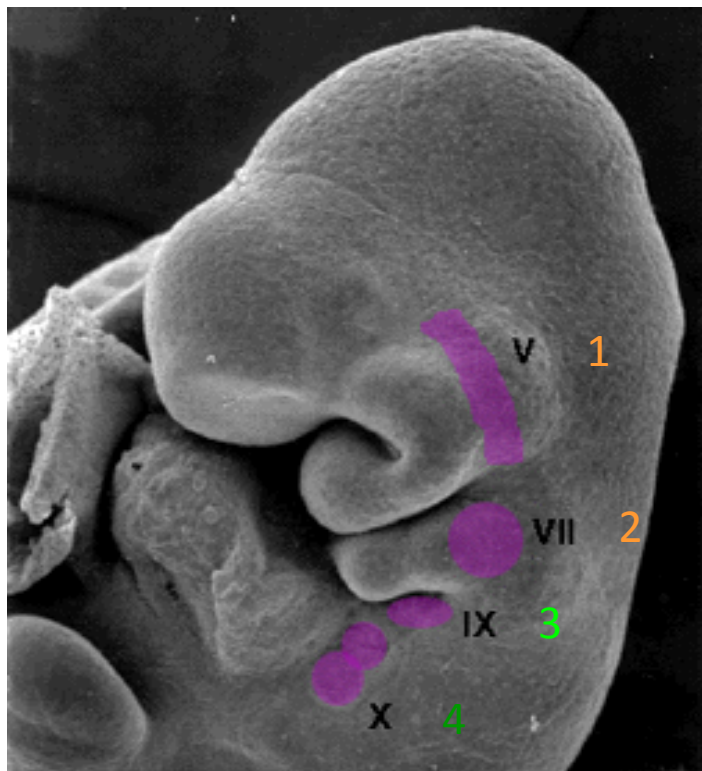


Saliência Nasal Medial+
Lateral

Fosseta Nasal

S.Nasal Medial
+
S. Maxilar

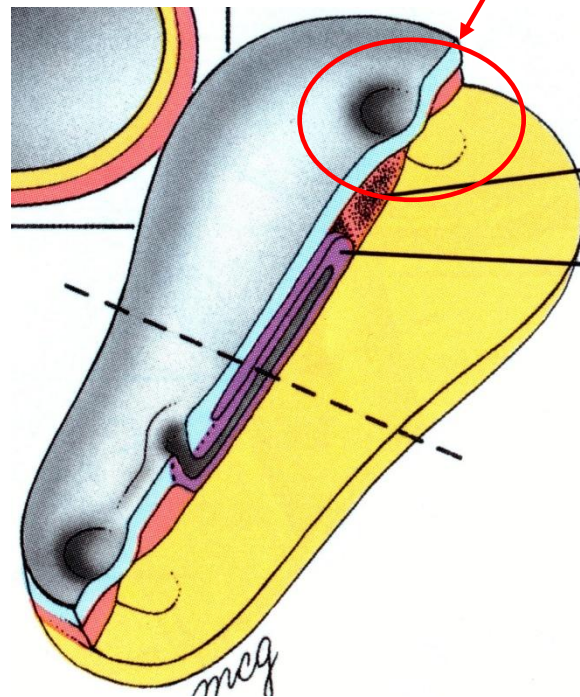
1º Arco



ARCO	Nariz	Palato	Língua
Eminência Frontal (0)	Nariz		
1	Lábio Inferior, Mandíbula		
2			
3			
4			

Desenvolvimento das cavidades nasal e oral

A CAVIDADE ORAL é formada pela ruptura da **MEMBRANA OROFARÍNGEA**

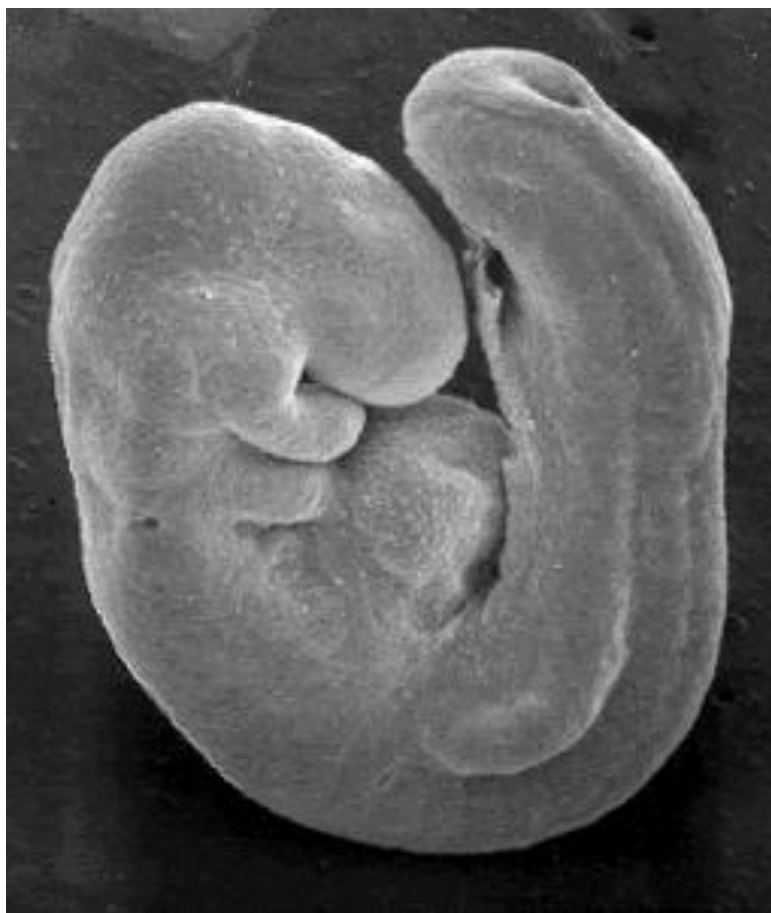


RELEMBRAR

cavidade oral
primitiva
(estomodeu)

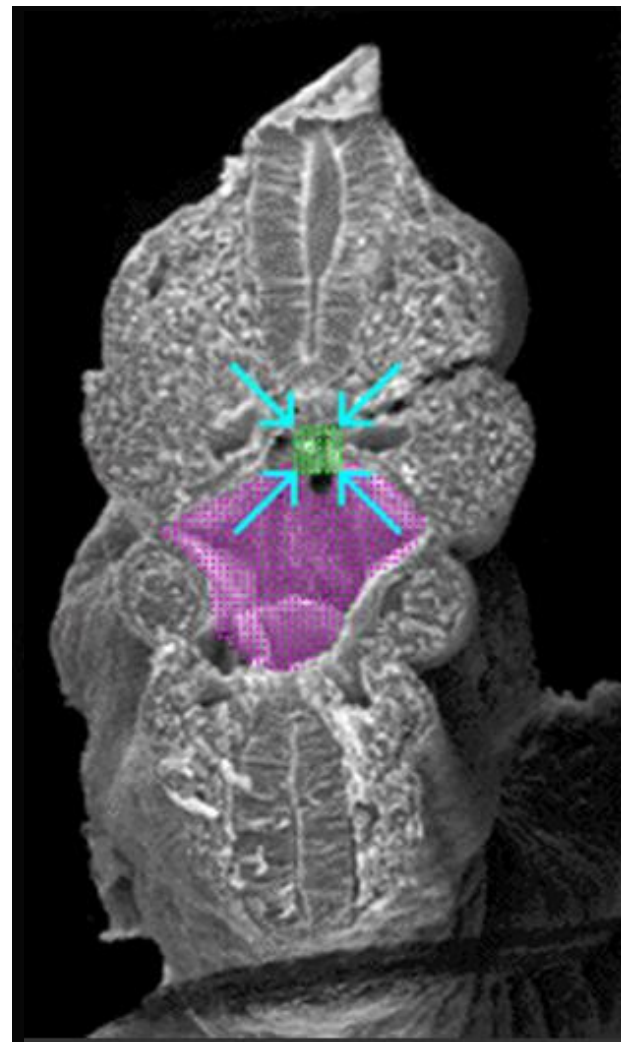
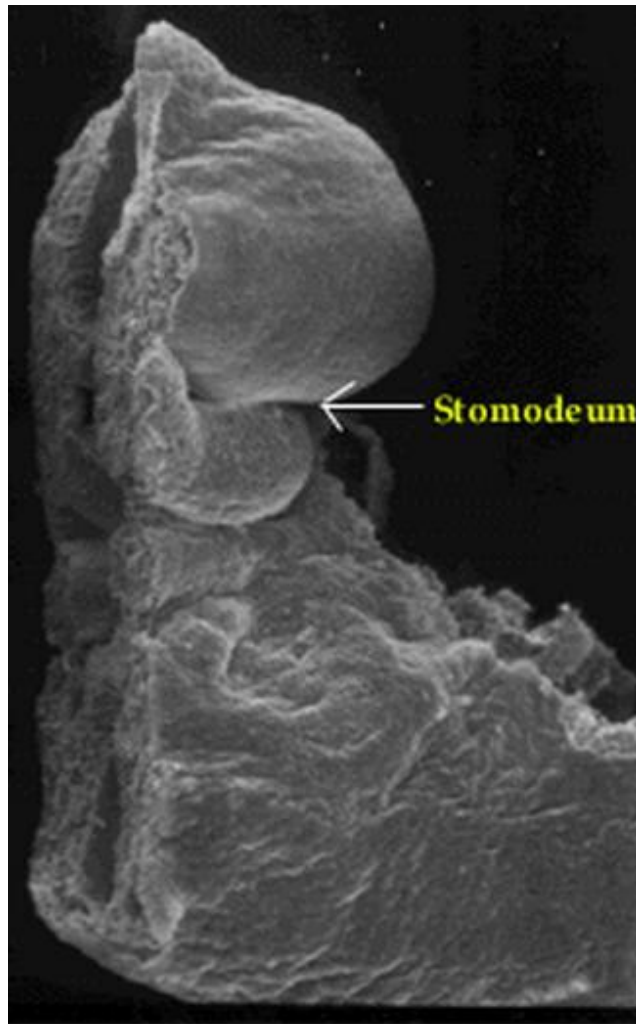
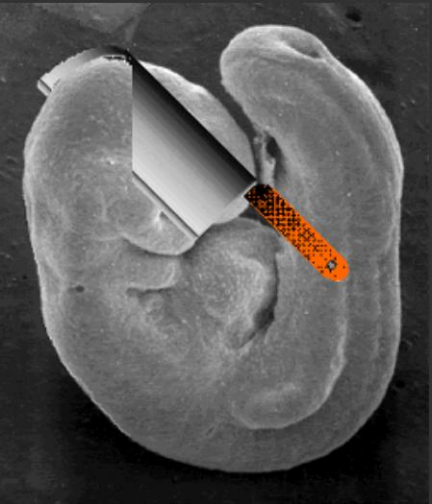


4th week



28 dias

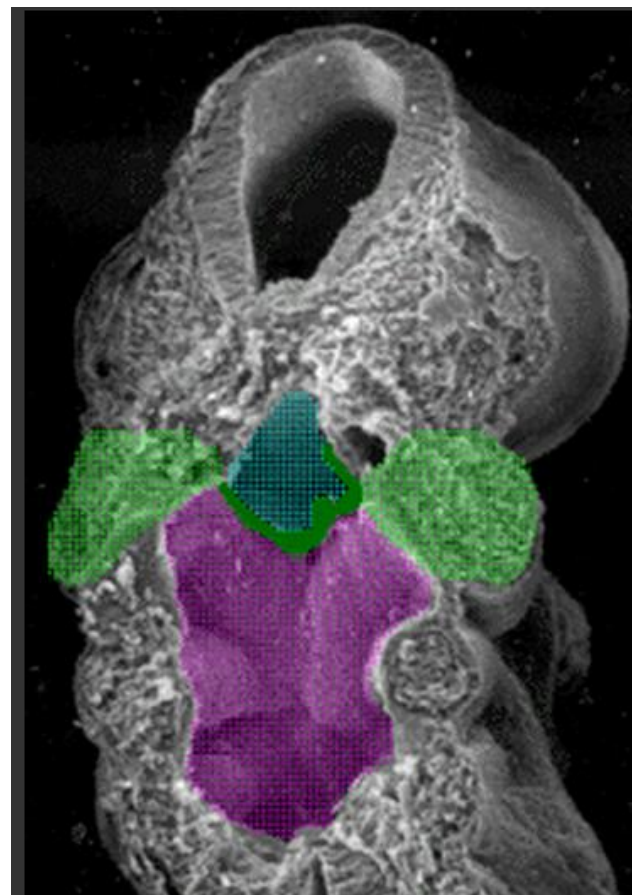
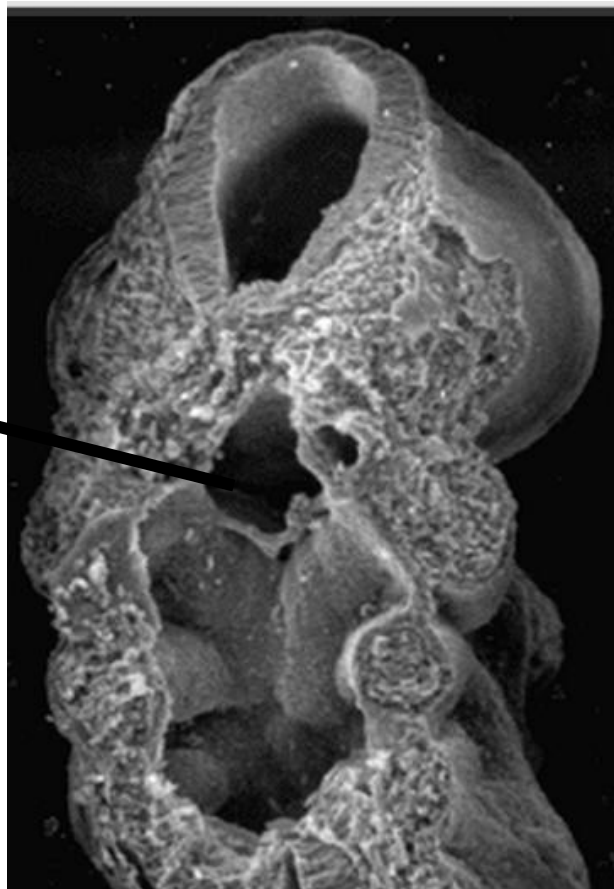
Vista dorsal

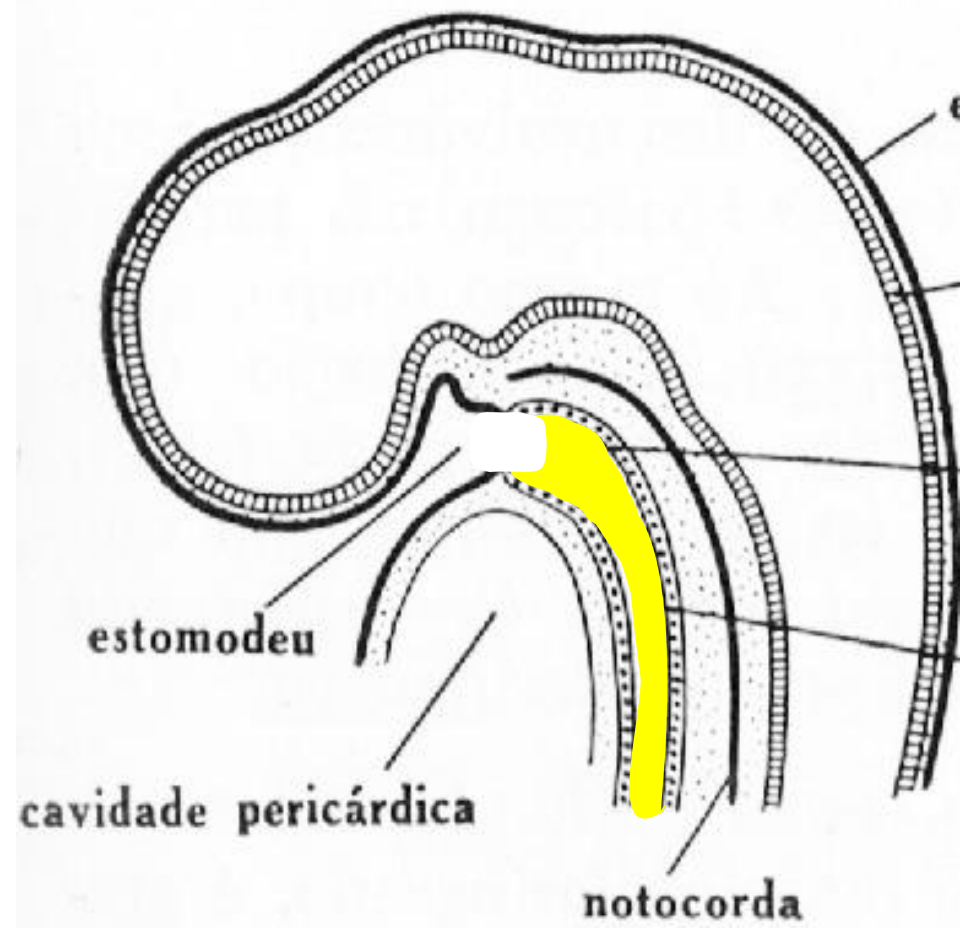
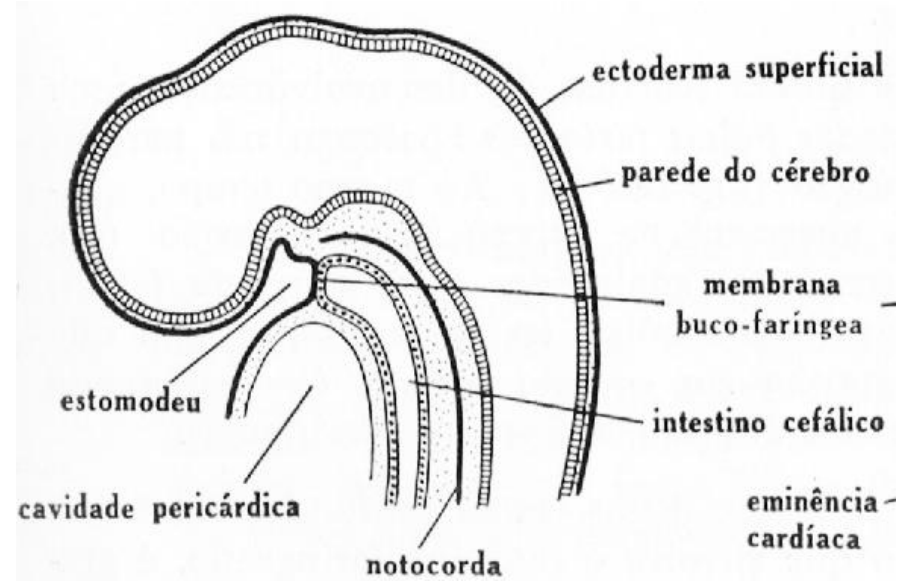


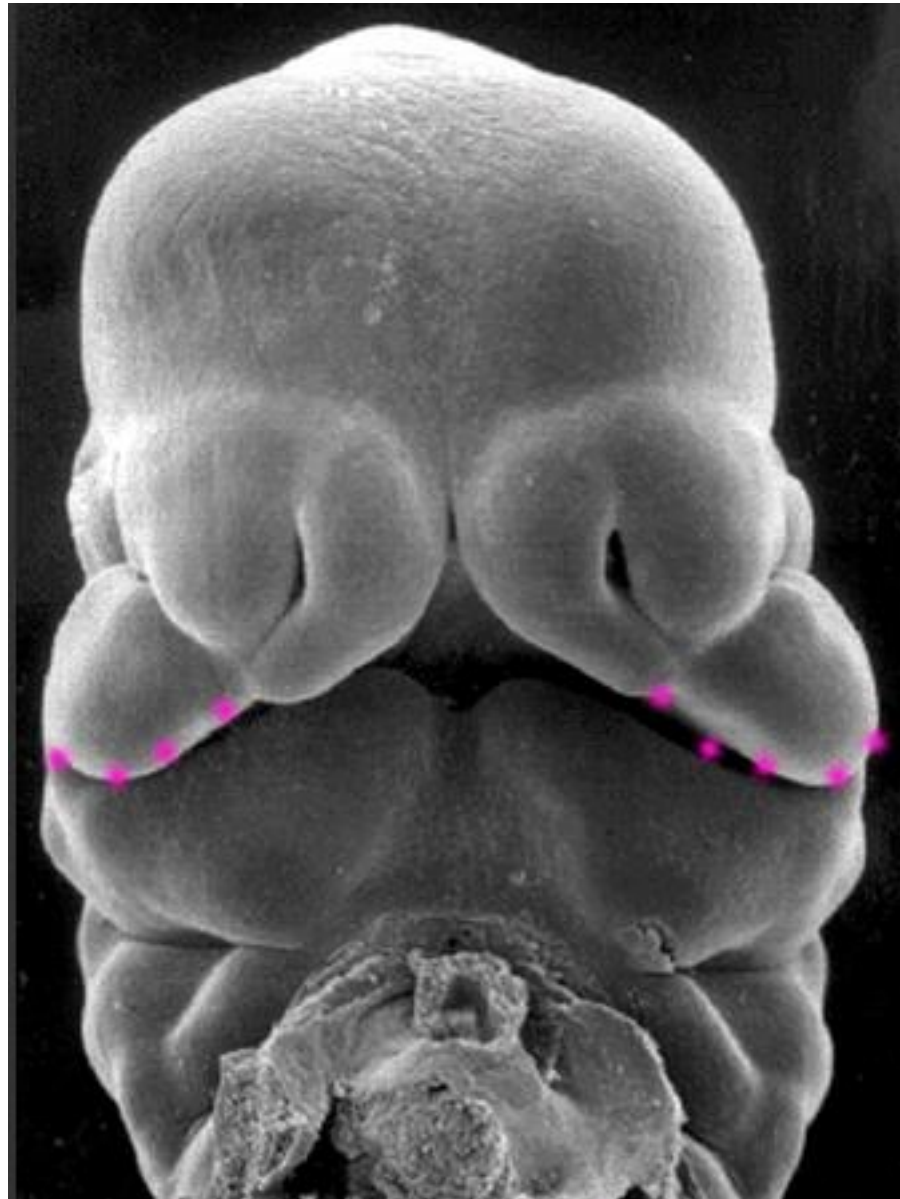
Vista dorsal

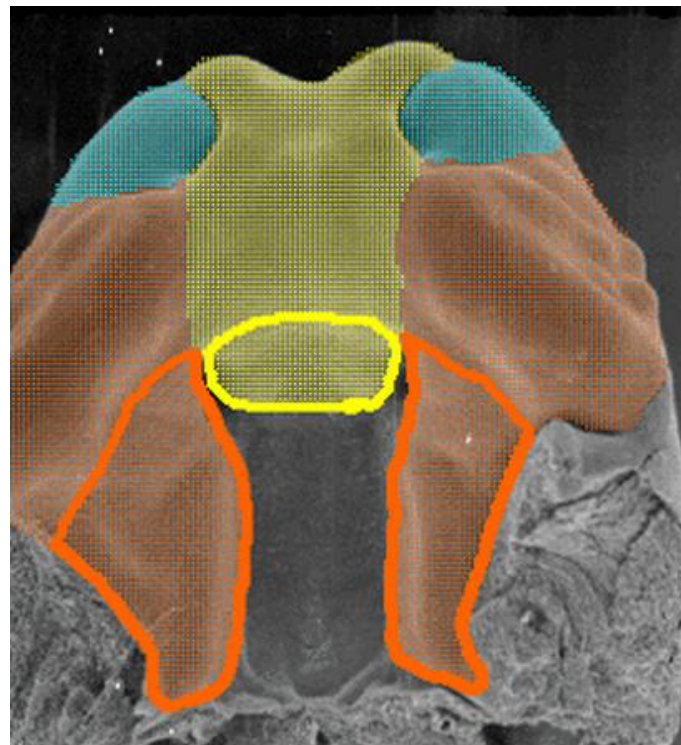
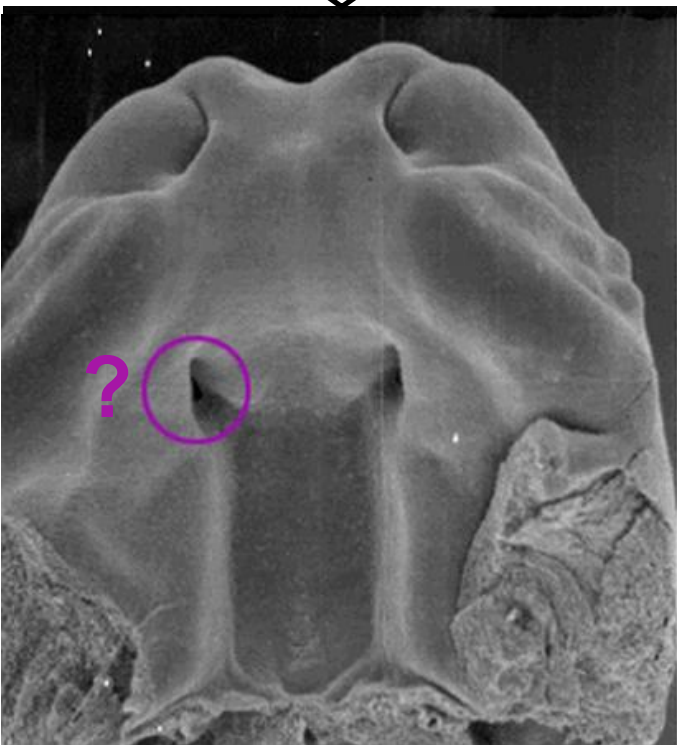
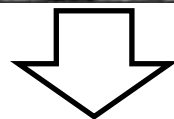
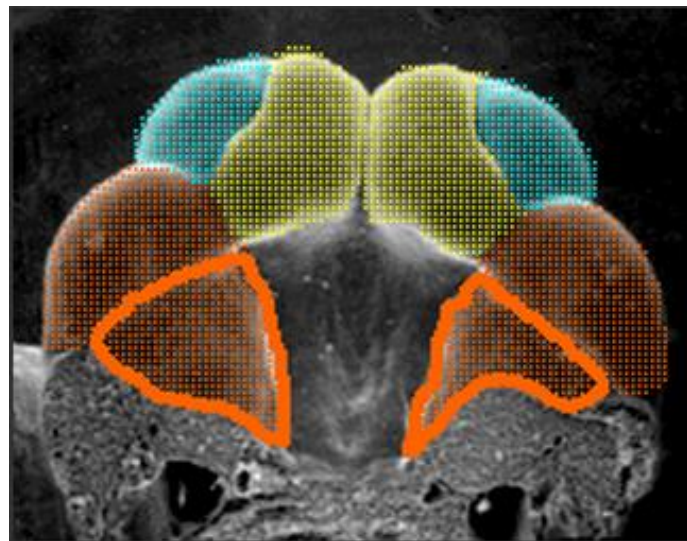
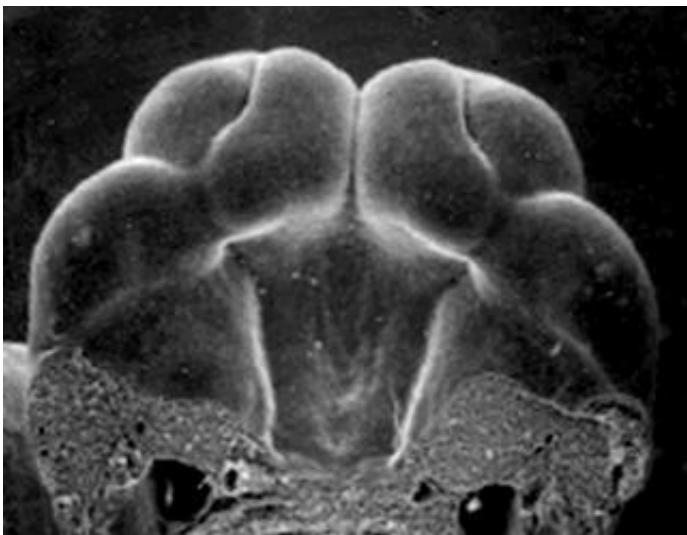


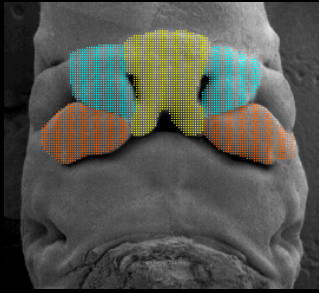
Rompimento da membrana orofaríngea!



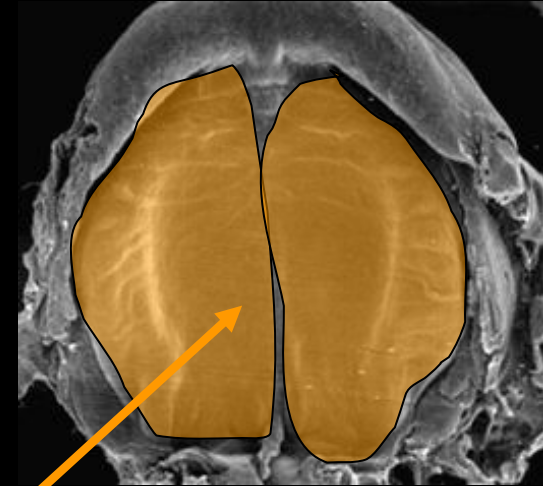
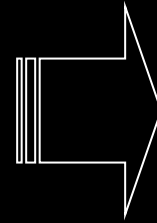
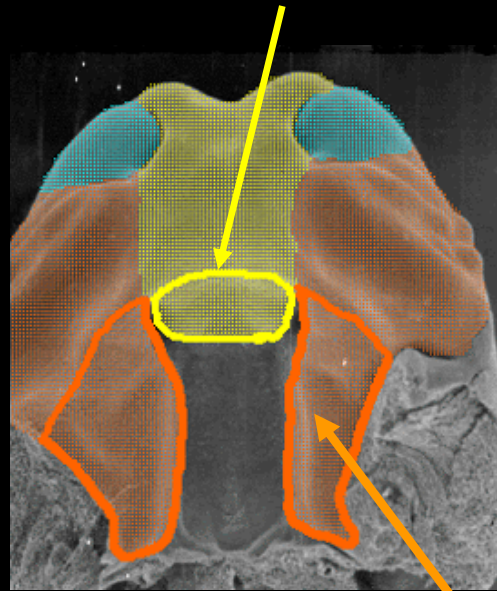






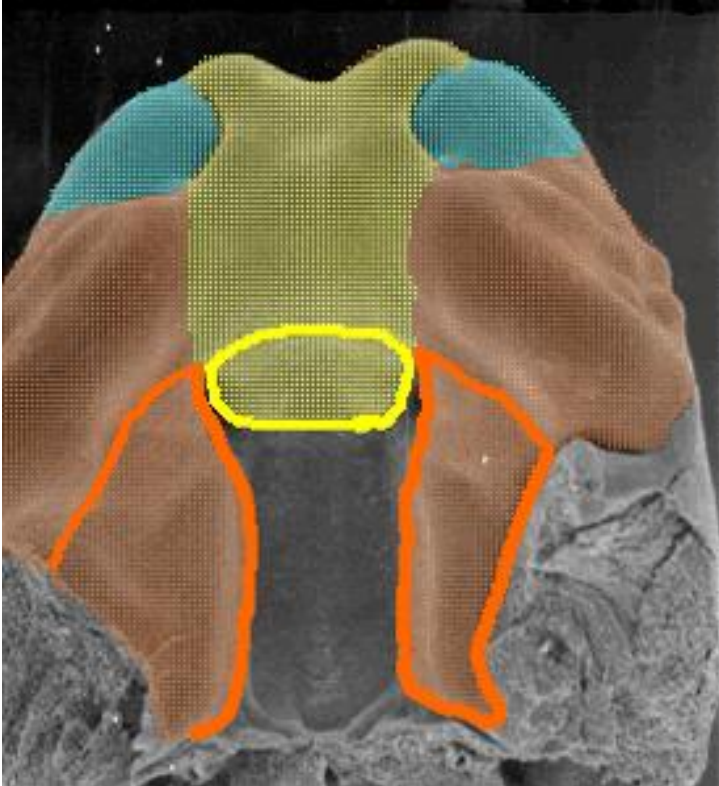


Palato Primário



Palato Secundário

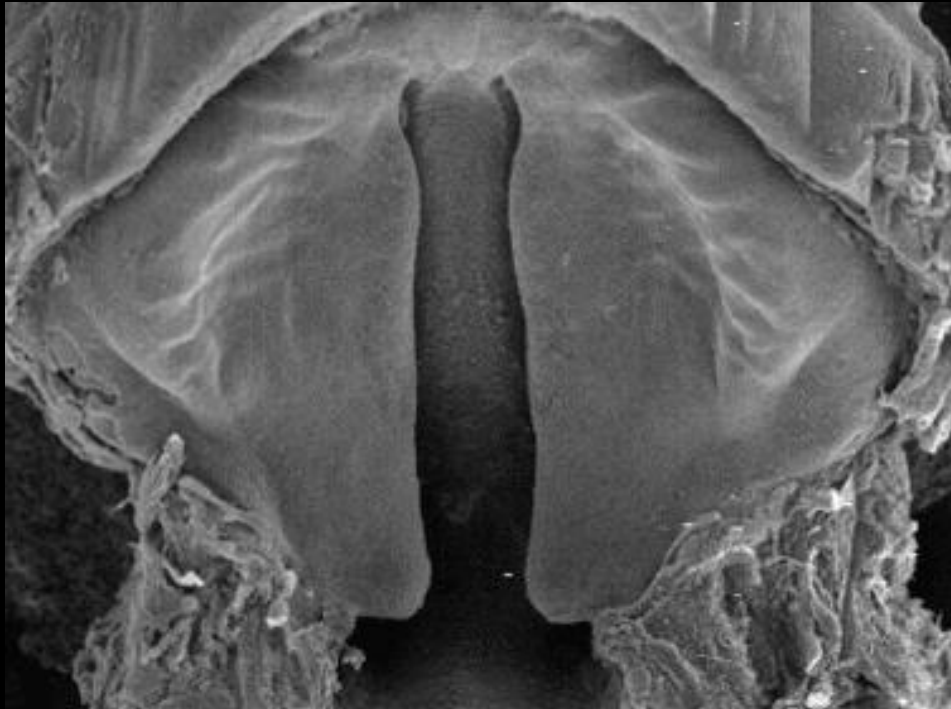
1. O Palato Primário origina do da fusão da Saliência Nasal Medial
2. O Palato Secundário, ou Definitivo, origina das CRISTAS PALATINAS, que partem dos Processos Maxilares



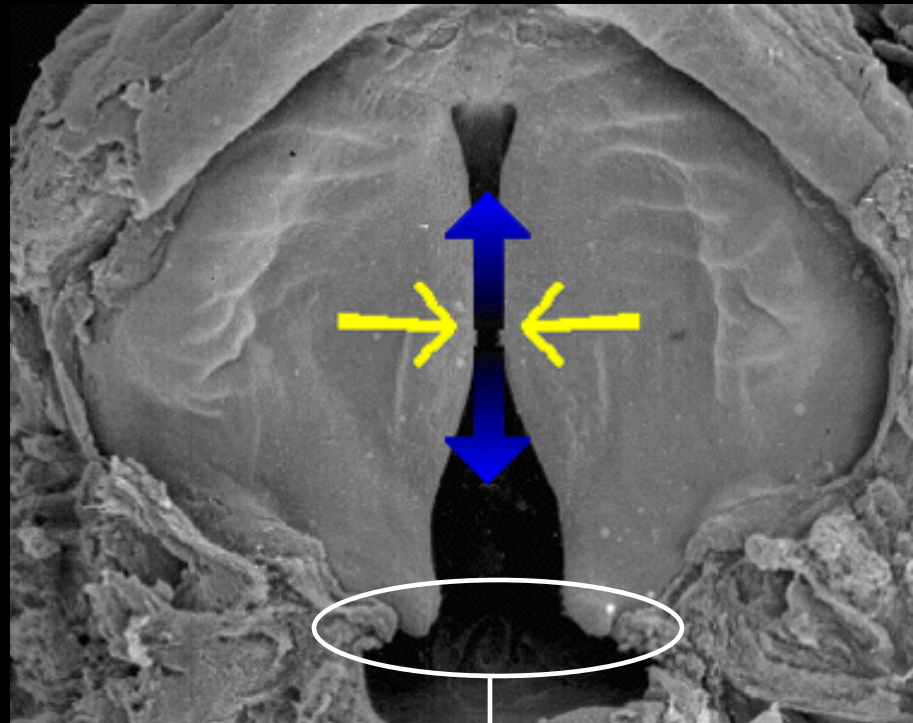
**membrana
oronasal
se rompendo!**



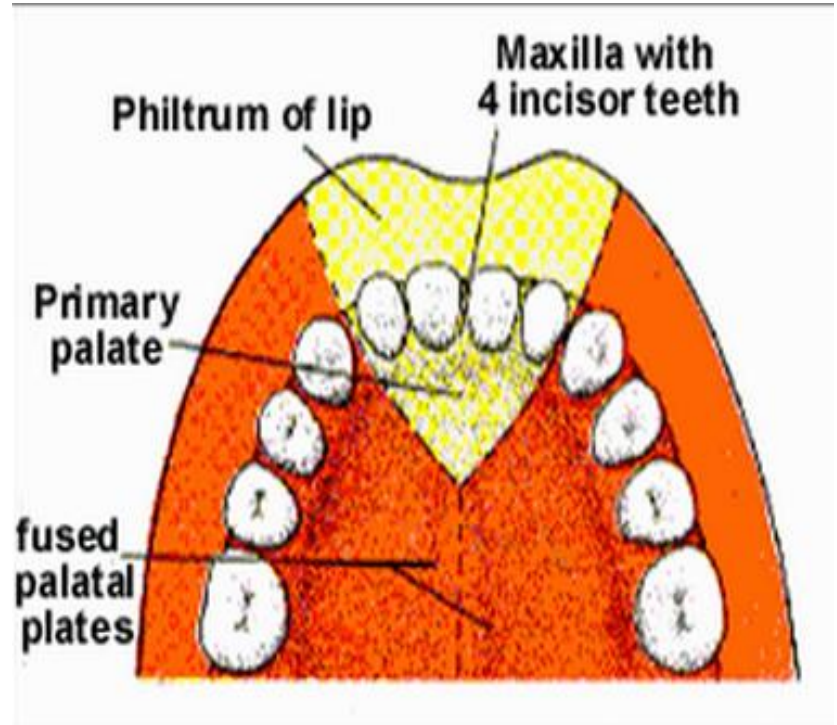
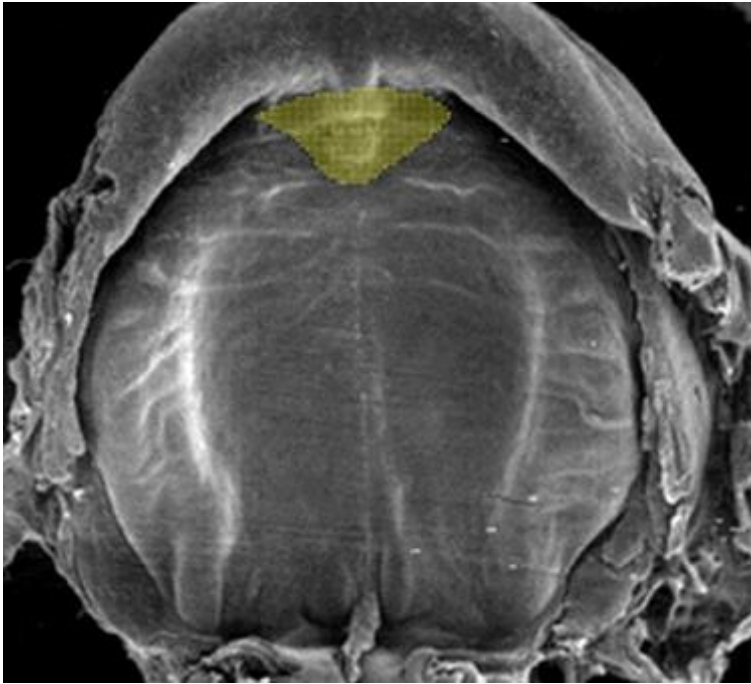
A fusão se inicia na porção mediana do palato



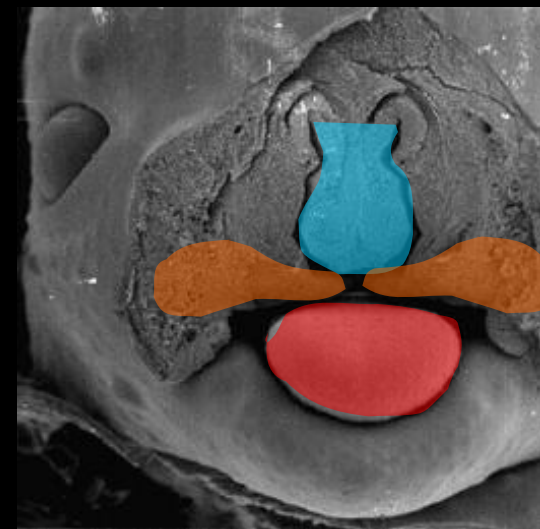
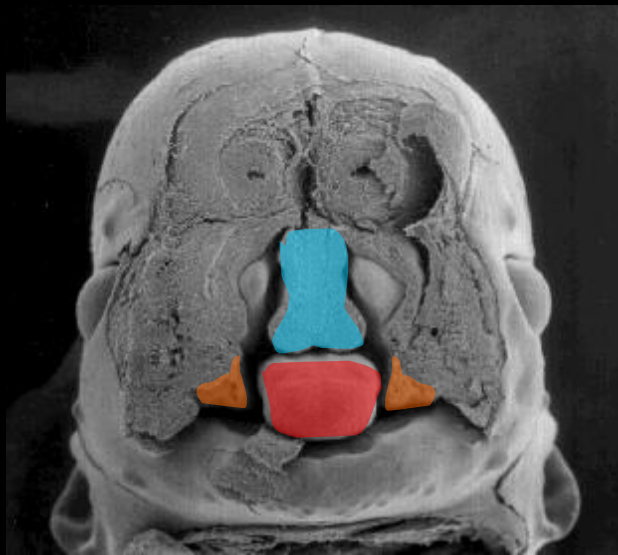
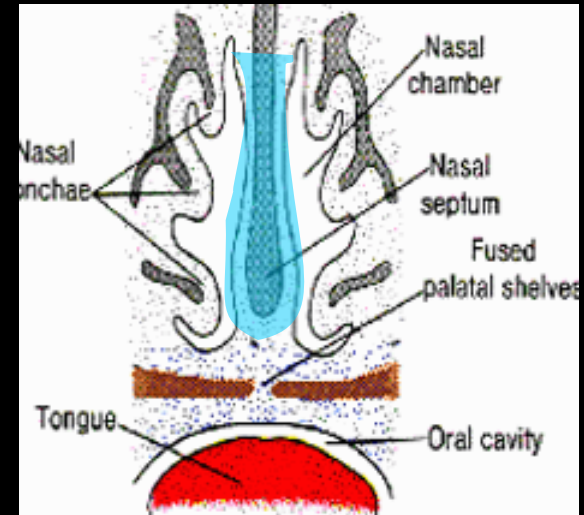
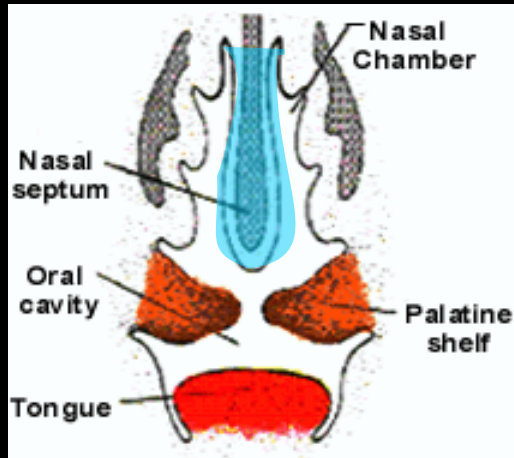
A fusão se inicia na porção mediana do palato

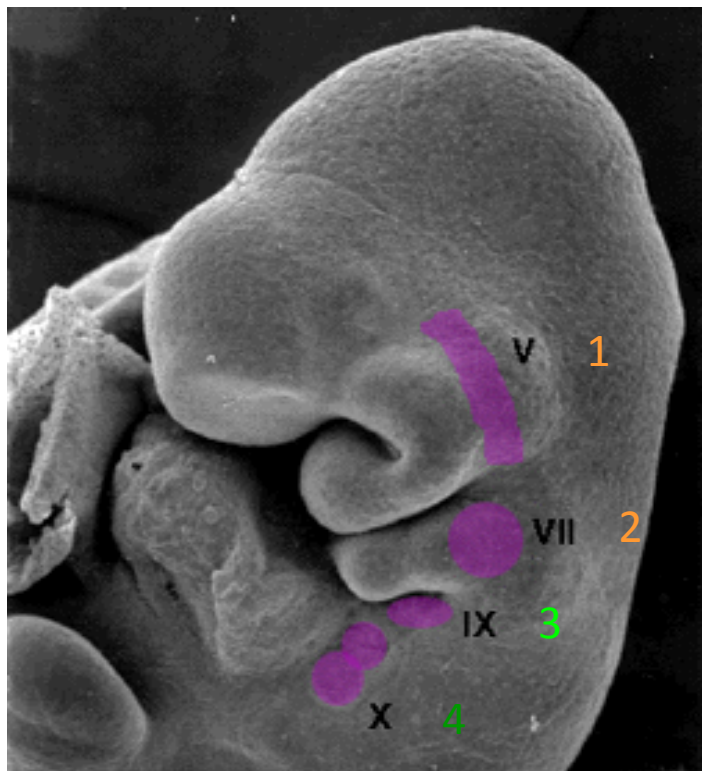


Futura Úvula

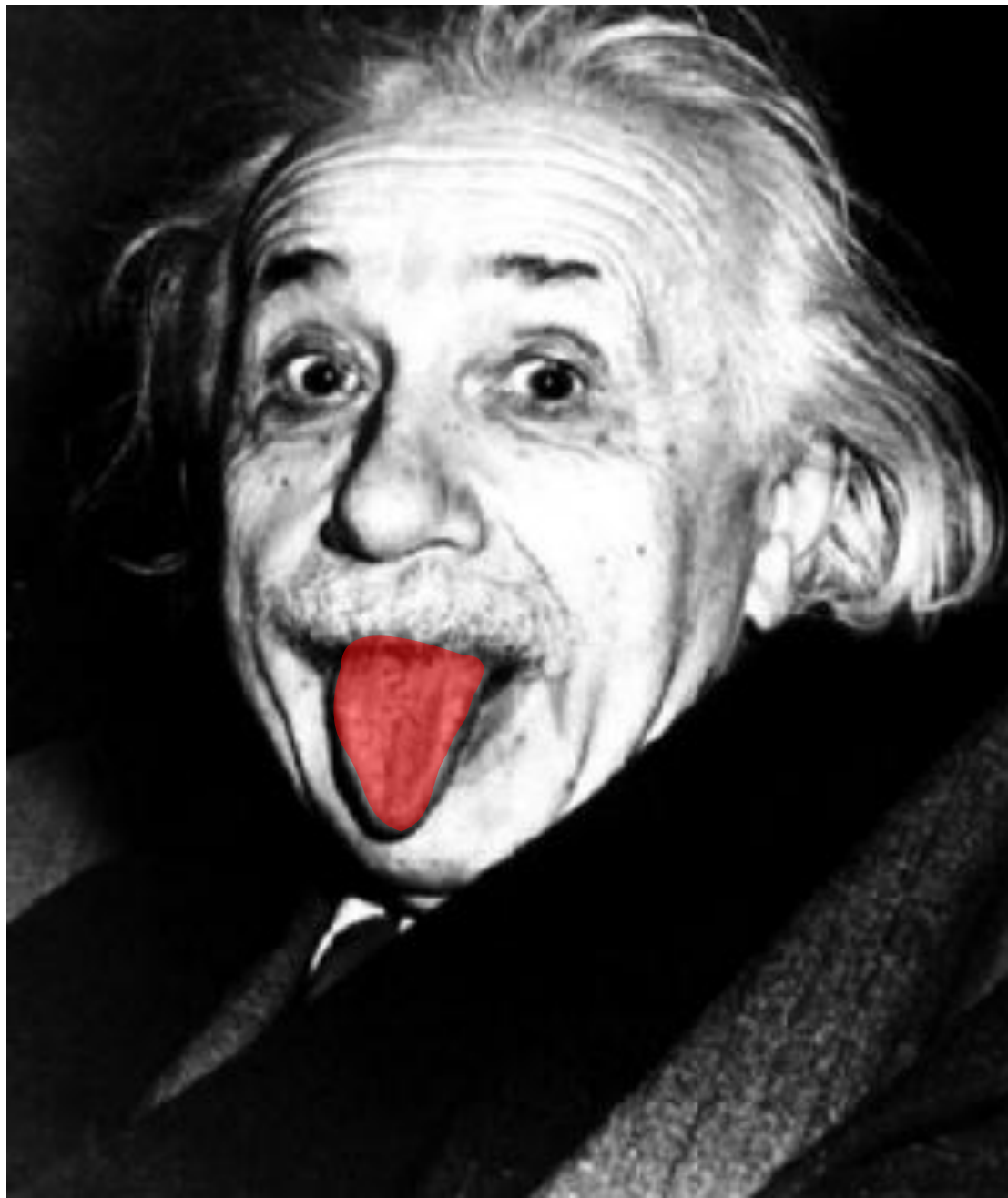


Frontalmente, as **Cristas Palatinas** crescem primeiro em direção à **Língua**, mas depois se fundem com o **Septo Nasal**

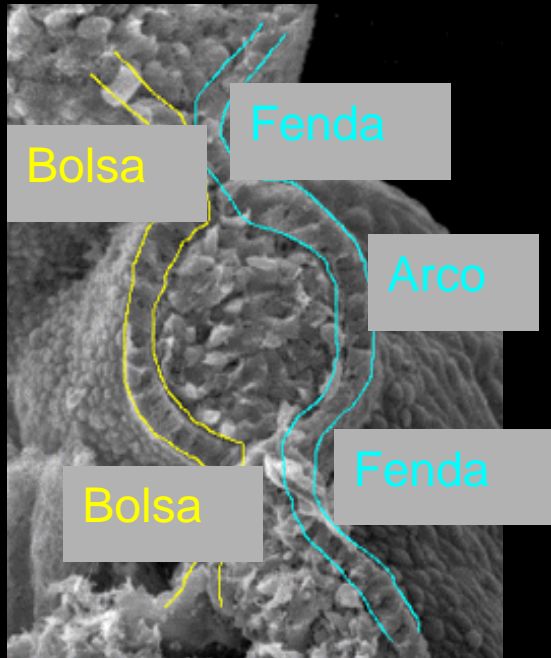




ARCO	Nariz	Palato	Língua
Eminência Frontal (0)	Placódios Nasais	Palato primário	
1	Lábio Inferior, Mandíbula	Palato secundário	
2			
3			
4			



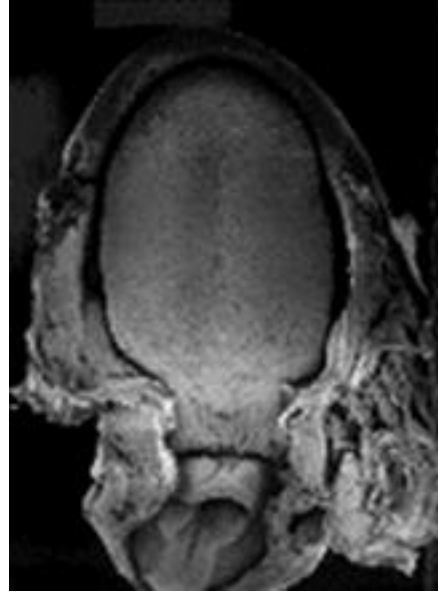
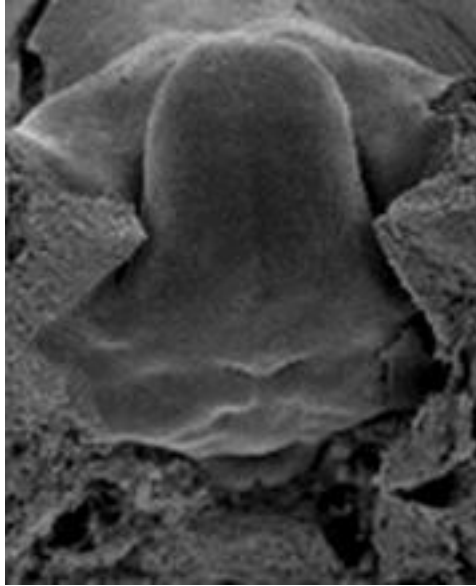
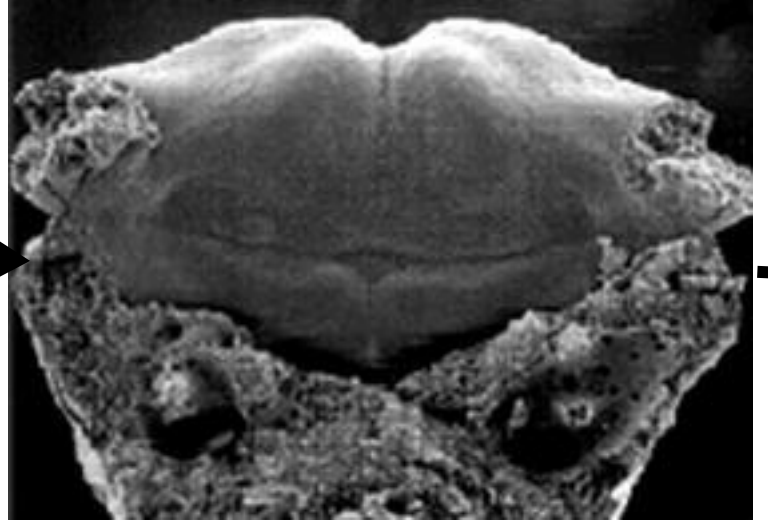
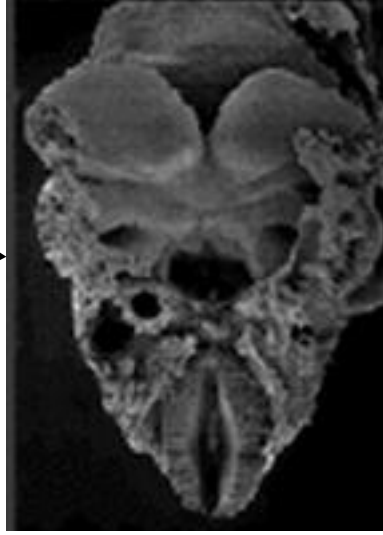
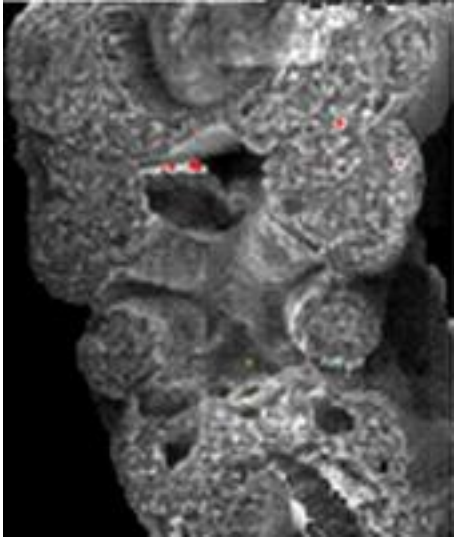
Origens Embrionárias dos tecidos da língua:



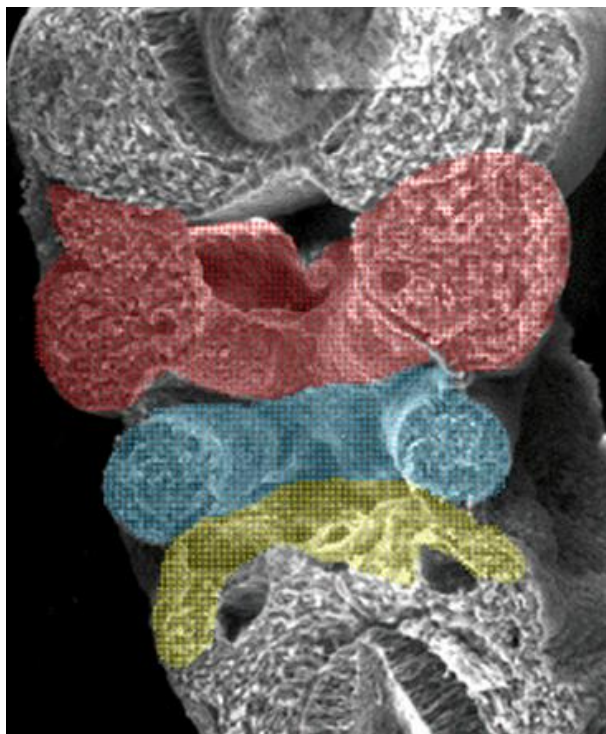
Mucosa: Bolsas Branquiais = ENDODERMA

Músculo: MESODERMA

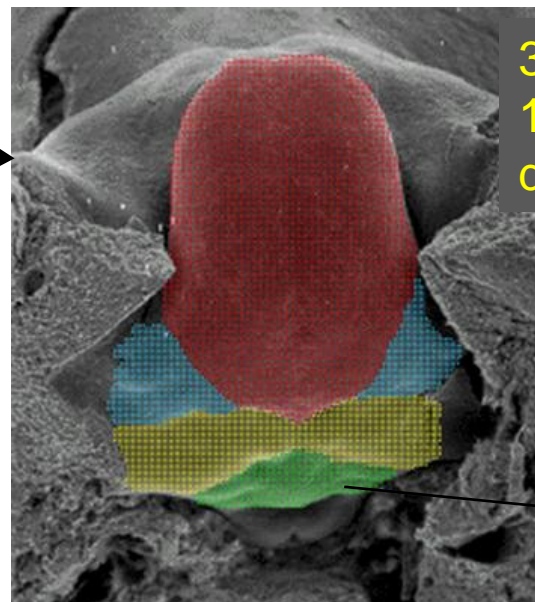
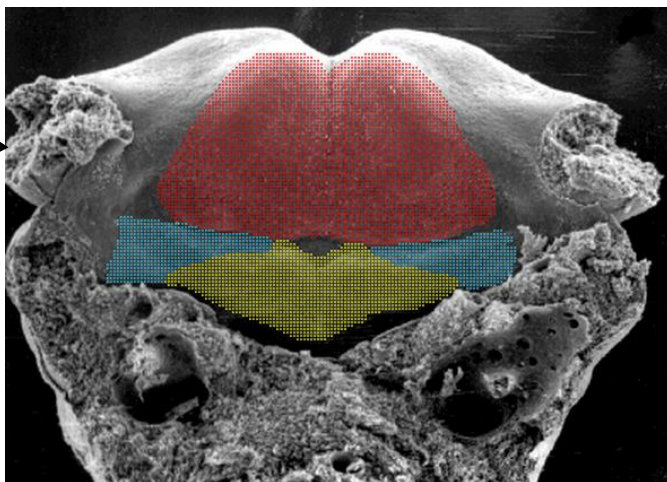
Na 4ª semana há 5 arcos faríngeos e as bolsas que os separam



O assoalho da cavidade oral é formado pelos arcos

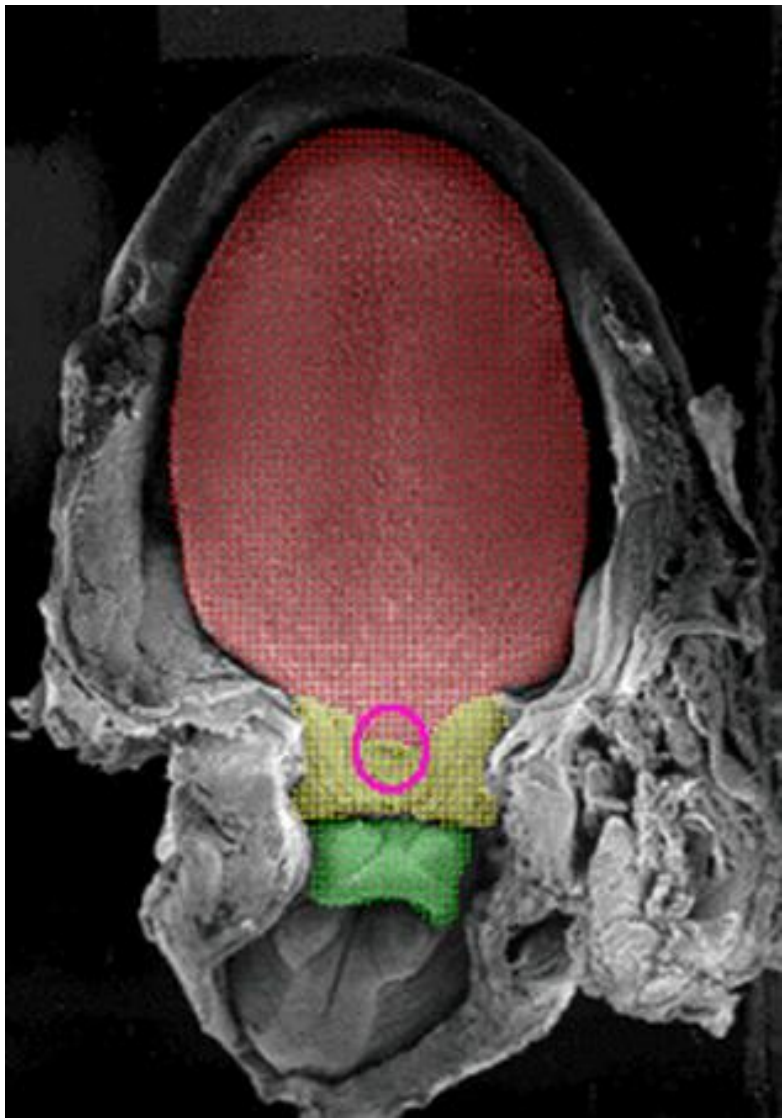


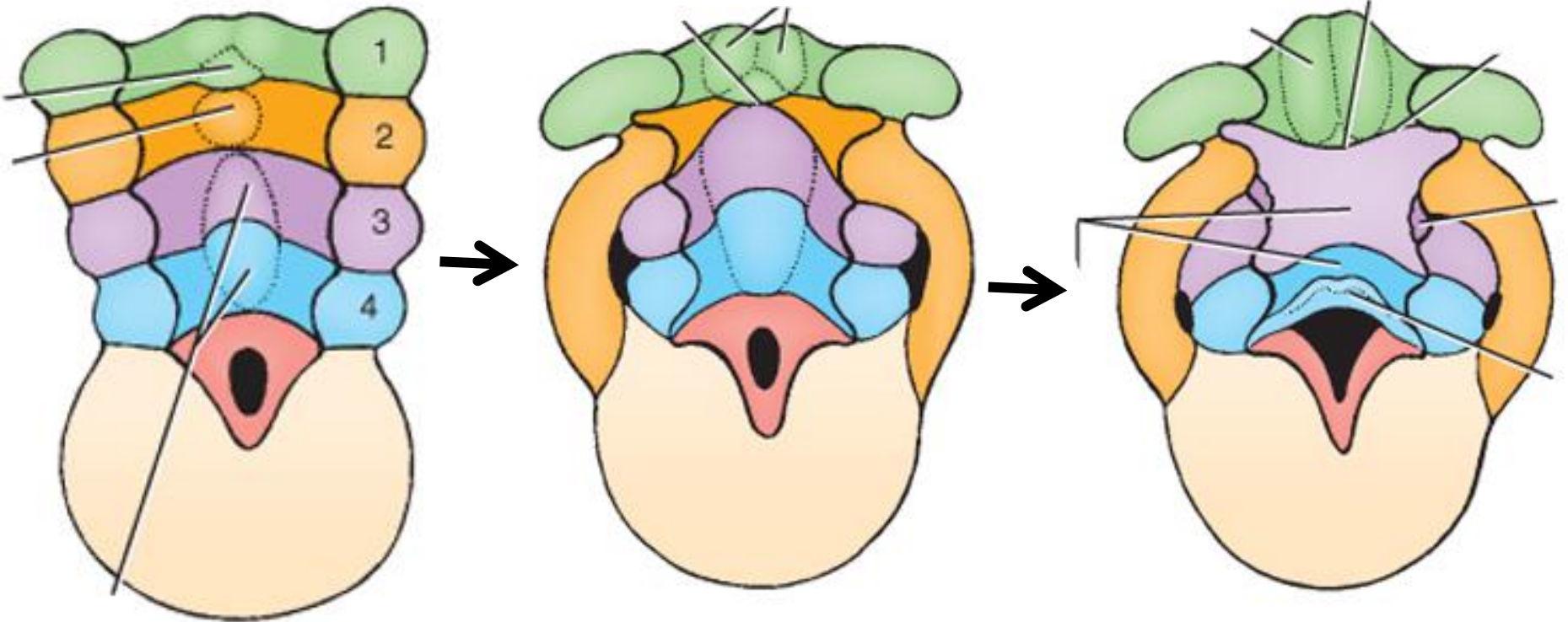
1º arco =
2/3 da
superfície
da língua



3º arco =
1/3 da superfície
da língua

Epiglote
(4º arco)



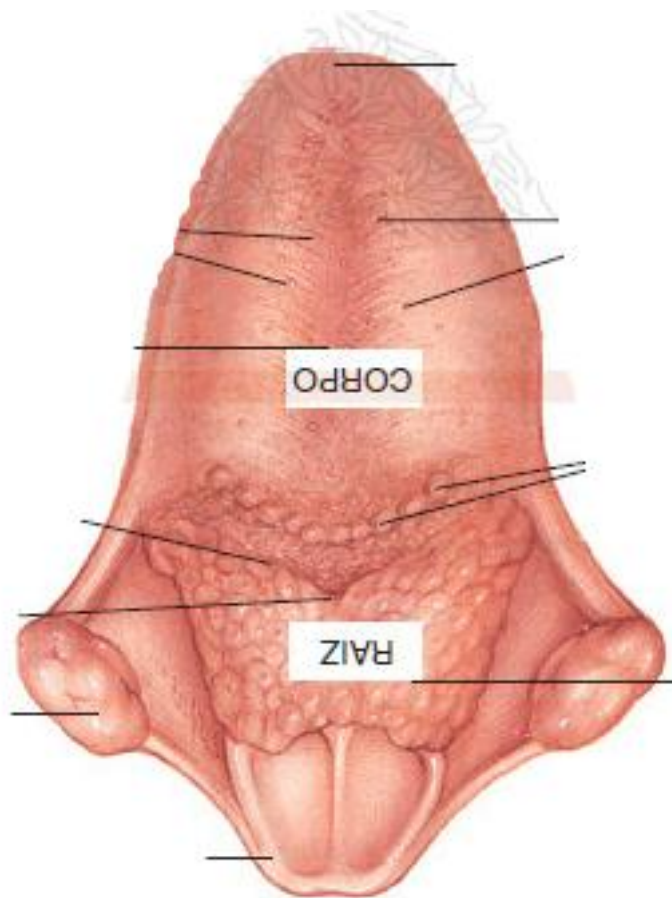


saliências dos diferentes arcos faríngeos

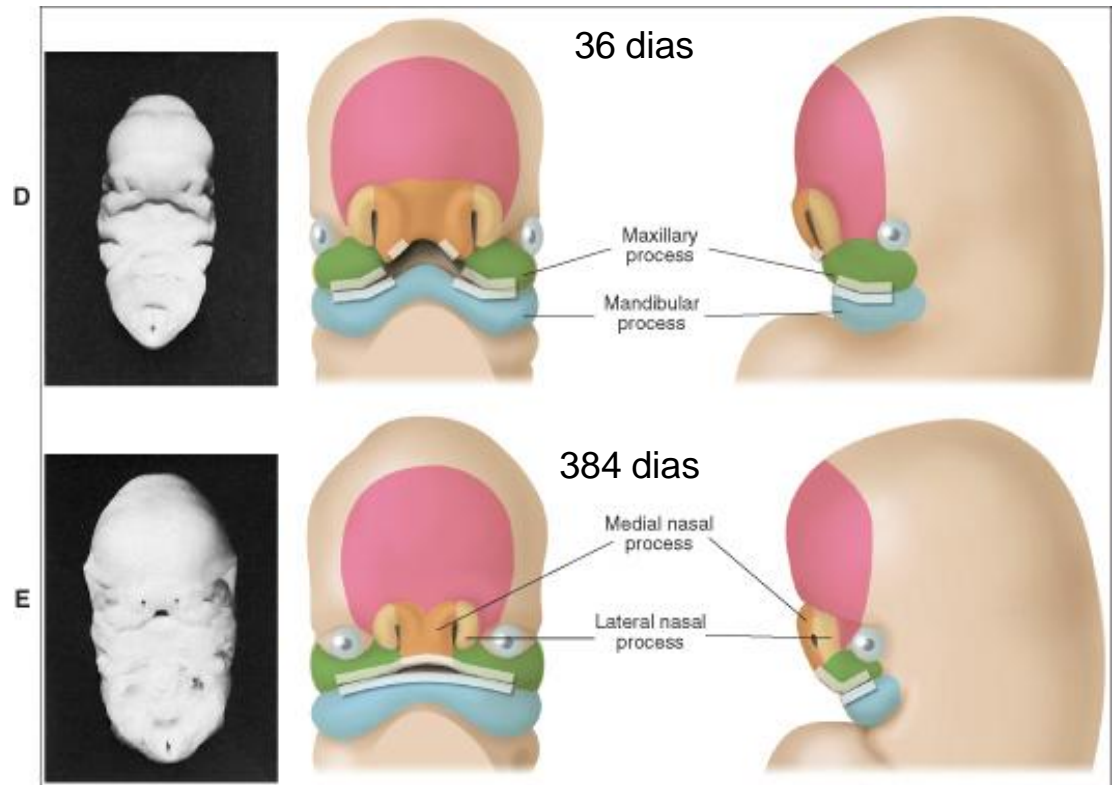
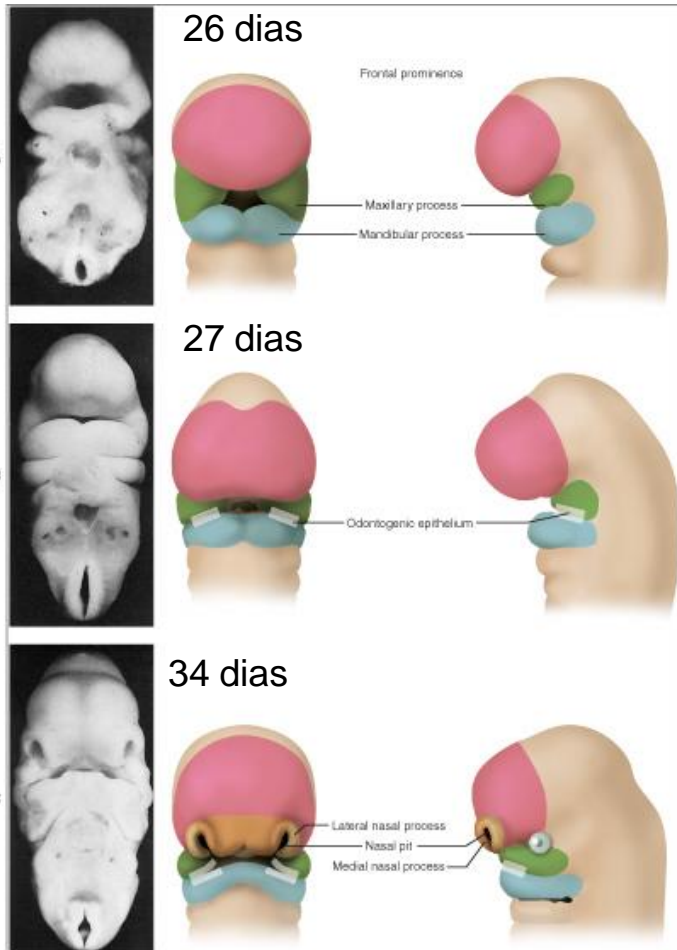
- 1º broto lingual mediano
- 2º cópula
- 3-4º eminência hipofaríngea

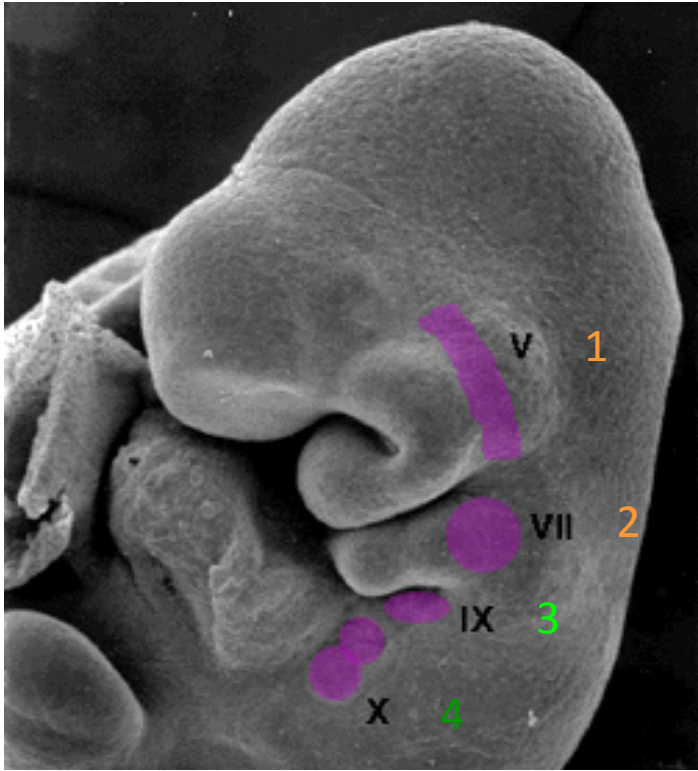
Quais arcos dão origem à **mucosa** da língua?

1º e 3º arcos faríngeos



Epitélio odontogênico



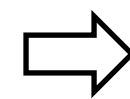
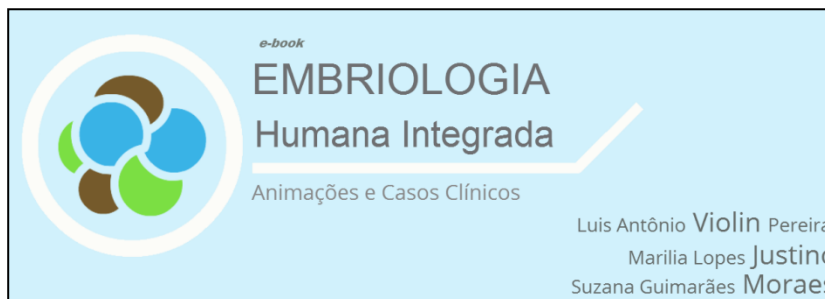
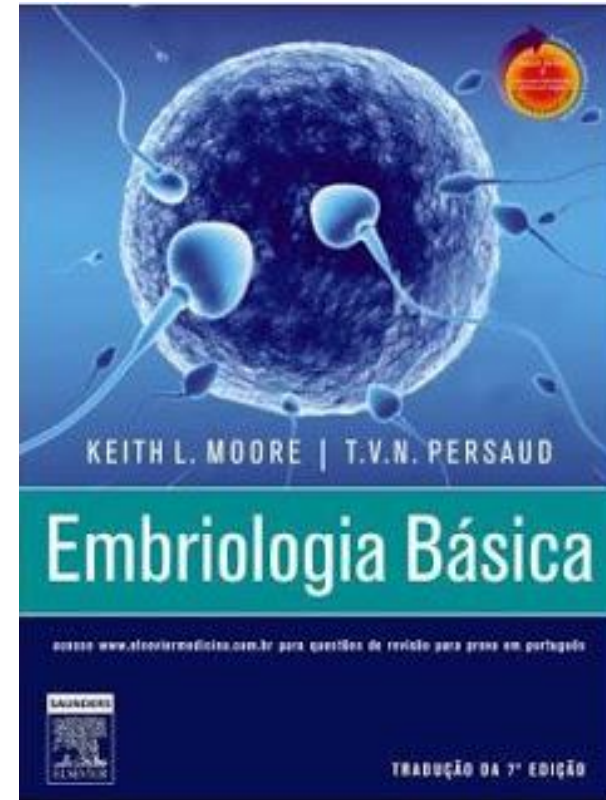
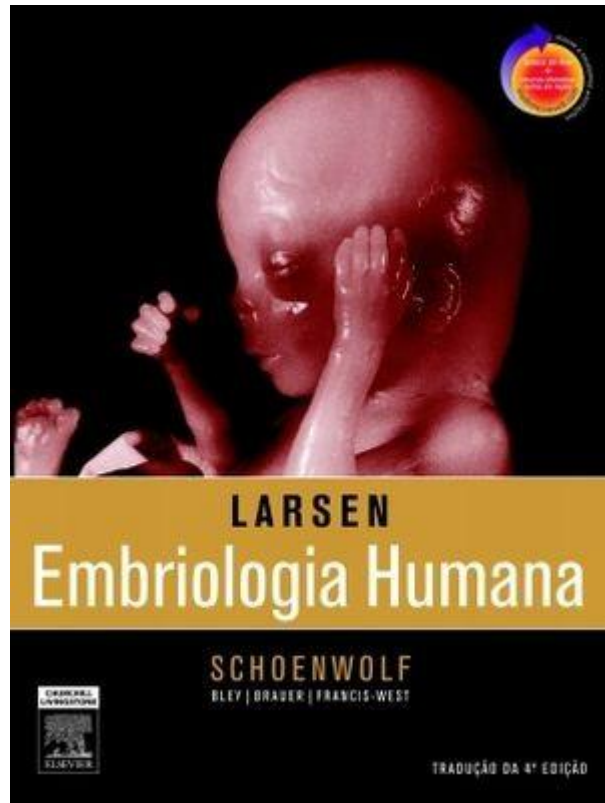


DENTES?

1º arco faríngeo
Proeminência frontal

ARCO	Nariz	Palato	Língua
Eminência Frontal (0)	Placódios Nasais	Palato primário	
1	Lábio Inferior, Mandíbula	Palato secundário	Corpo
2			Corpo
3			Base
4			Epiglote

Bibliografia



de gametogênese
até dobramento

<http://www.embriologiahumana.com.br/>